

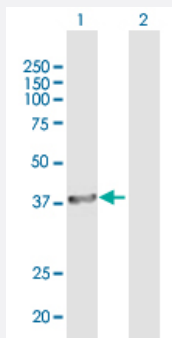
MaxPab®

BRCC3 purified MaxPab mouse polyclonal antibody (B01P)

Catalog # H00079184-B01P

Size 50 ug

Applications

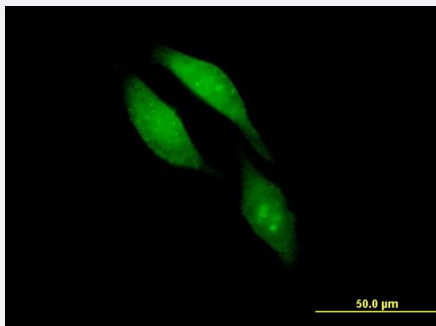


Western Blot (Transfected lysate)

Western Blot analysis of BRCC3 expression in transfected 293T cell line ([H00079184-T01](#)) by BRCC3 MaxPab polyclonal antibody.

Lane 1: BRCC3 transfected lysate(34.76 KDa).

Lane 2: Non-transfected lysate.



Immunofluorescence

Immunofluorescence of purified MaxPab antibody to BRCC3 on HeLa cell. [antibody concentration 10 ug/ml]

Specification

Product Description

Mouse polyclonal antibody raised against a full-length human BRCC3 protein.

Immunogen

BRCC3 (NP_077308.1, 1 a.a. ~ 316 a.a) full-length human protein.

Sequence

MAVQVVQAVQAVHLESDAFLVCLNHALSTEKEEVMGLCIGELNDDTRSDSKFAYTGTEMRTVAE
KVDVAVRMVHIHSVILRRSDKRKDRVEISPEQLSAASTEAEERLAELTGRPMRVVGWYHSHPHITVWP
SHVDVRTQAMYQMMDQGFVGLIFSCFIEDKNTKTGRVLYTCFQSIQAQKSSSESLHGPRDFWSSS
QHISIEGQKEEERYERIEPIHVPHVTIGKVCLESAVELPKILCQEEQDAYRRIHSLTHLDSVTKIHNHS
VFTKNLCSQMSAVSGPLLQWLEDRLQNNQQHLQELQQEKEELMQELSSLE

Host

Mouse

Reactivity	Human
Interspecies Antigen Sequence	Mouse (89); Rat (85)
Quality Control Testing	Antibody reactive against mammalian transfected lysate.
Storage Buffer	In 1x PBS, pH 7.4
Storage Instruction	Store at -20°C or lower. Aliquot to avoid repeated freezing and thawing.

Applications

- Western Blot (Transfected lysate)

Western Blot analysis of BRCC3 expression in transfected 293T cell line ([H00079184-T01](#)) by BRCC3 MaxPab polyclonal antibody.

Lane 1: BRCC3 transfected lysate(34.76 KDa).

Lane 2: Non-transfected lysate.

[Protocol Download](#)

- Immunofluorescence

Immunofluorescence of purified MaxPab antibody to BRCC3 on HeLa cell. [antibody concentration 10 ug/ml]

Gene Info — BRCC3

Entrez GeneID	79184
GeneBank Accession#	NM_024332.2
Protein Accession#	NP_077308.1
Gene Name	BRCC3
Gene Alias	BRCC36, C6.1A, CXorf53
Gene Description	BRCA1/BRCA2-containing complex, subunit 3
Omim ID	300617
Gene Ontology	Hyperlink

Gene Summary

This gene encodes a subunit of the BRCA1-BRCA2-containing complex (BRCC), which is an E3 ubiquitin ligase. This protein is also thought to be involved in the cellular response to ionizing radiation and progression through the G2/M checkpoint. Alternative splicing results in multiple transcript variants. [provided by RefSeq]

Other Designations

BRCA1/BRCA2-containing complex subunit 36|OTTHUMP00000061450|c6.1A