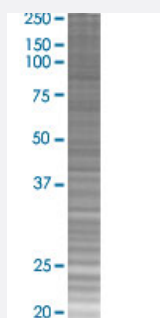


# MMP28 293T Cell Transient Overexpression Lysate(Denatured)

Catalog # H00079148-T03

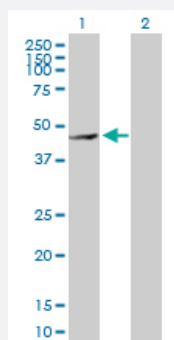
Size 100 uL

## Applications



### SDS-PAGE Gel

MMP28 transfected lysate.



### Western Blot

Lane 1: MMP28 transfected lysate ( 43.23 KDa)

Lane 2: Non-transfected lysate.

## Specification

Transfected Cell Line	293T
Plasmid	pCMV-MMP28 full-length
Host	Human
Theoretical MW (kDa)	43.23
Interspecies Antigen Sequence	Mouse (83)

**Quality Control Testing**

Transient overexpression cell lysate was tested with Anti-MMP28 antibody ([H00079148-D01P](#)) by Western Blots.  
SDS-PAGE Gel  
MMP28 transfected lysate.  
Western Blot  
Lane 1: MMP28 transfected lysate (43.23 KDa)  
Lane 2: Non-transfected lysate.

**Storage Buffer**

1X Sample Buffer (50 mM Tris-HCl, 2% SDS, 10% glycerol, 300 mM 2-mercaptoethanol, 0.01% Bromophenol blue)

**Storage Instruction**

Store at -80°C. Aliquot to avoid repeated freezing and thawing.

## Applications

- Western Blot

## Gene Info — MMP28

**Entrez GeneID**

[79148](#)

**GeneBank Accession#**

[BC002631.1](#)

**Protein Accession#**

[AAH02631](#)

**Gene Name**

MMP28

**Gene Alias**

EPILYSIN, MM28, MMP-28, MMP25

**Gene Description**

matrix metalloproteinase 28

**Omim ID**

[608417](#)

**Gene Ontology**

[Hyperlink](#)

**Gene Summary**

Proteins of the matrix metalloproteinase (MMP) family are involved in the breakdown of extracellular matrix for both normal physiological processes, such as embryonic development, reproduction and tissue remodeling, and disease processes, such as asthma and metastasis. This gene encodes a secreted enzyme that degrades casein. Its expression pattern suggests that it plays a role in tissue homeostasis and in wound repair. Transcript variants encoding different isoforms have been described. [provided by RefSeq]

**Other Designations**

matrix metalloproteinase 28