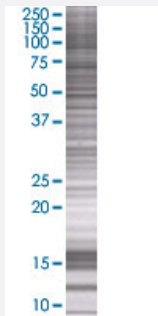


MMP28 293T Cell Transient Overexpression Lysate(Denatured)

Catalog # H00079148-T02

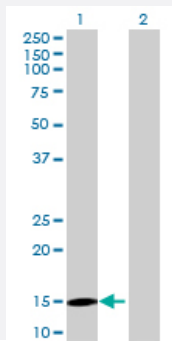
Size 100 uL

Applications



SDS-PAGE Gel

MMP28 transfected lysate.



Western Blot

Lane 1: MMP28 transfected lysate (14.41 KDa)

Lane 2: Non-transfected lysate.

Specification

Transfected Cell Line	293T
Plasmid	pCMV-MMP28 full-length
Host	Human
Theoretical MW (kDa)	14.41
Interspecies Antigen Sequence	Mouse (83)

Quality Control Testing

Transient overexpression cell lysate was tested with Anti-MMP28 antibody ([H00079148-B02](#)) by Western Blots.
SDS-PAGE Gel
MMP28 transfected lysate.
Western Blot
Lane 1: MMP28 transfected lysate (14.41 KDa)
Lane 2: Non-transfected lysate.

Storage Buffer

1X Sample Buffer (50 mM Tris-HCl, 2% SDS, 10% glycerol, 300 mM 2-mercaptoethanol, 0.01% Bromophenol blue)

Storage Instruction

Store at -80°C. Aliquot to avoid repeated freezing and thawing.

Applications

- Western Blot

Gene Info — MMP28

Entrez GeneID

[79148](#)

GeneBank Accession#

[NM_001032278.1](#)

Protein Accession#

[NP_001027449.1](#)

Gene Name

MMP28

Gene Alias

EPILYSIN, MM28, MMP-28, MMP25

Gene Description

matrix metalloproteinase 28

Omim ID

[608417](#)

Gene Ontology

[Hyperlink](#)

Gene Summary

Proteins of the matrix metalloproteinase (MMP) family are involved in the breakdown of extracellular matrix for both normal physiological processes, such as embryonic development, reproduction and tissue remodeling, and disease processes, such as asthma and metastasis. This gene encodes a secreted enzyme that degrades casein. Its expression pattern suggests that it plays a role in tissue homeostasis and in wound repair. Transcript variants encoding different isoforms have been described. [provided by RefSeq]

Other Designations

matrix metalloproteinase 28