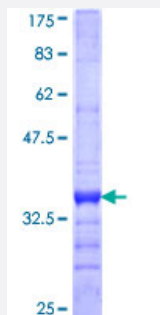


MMP28 (Human) Recombinant Protein (Q01)

Catalog # H00079148-Q01

Size 25 ug, 10 ug

Applications



Specification

Product Description	Human MMP28 partial ORF (NP_077278, 441 a.a. - 520 a.a.) recombinant protein with GST-tag at N-terminal.
Sequence	LARGGLQVEPYYPRLQDWGGIPEEVSGALPRPDGSIIFRDDRYWRLDQAKLQATTSGRWATEL PWMGCWHANSGSALF
Host	Wheat Germ (in vitro)
Theoretical MW (kDa)	34.54
Interspecies Antigen Sequence	Mouse (83)
Preparation Method	in vitro wheat germ expression system
Purification	Glutathione Sepharose 4 Fast Flow
Quality Control Testing	12.5% SDS-PAGE Stained with Coomassie Blue.
Storage Buffer	50 mM Tris-HCl, 10 mM reduced Glutathione, pH=8.0 in the elution buffer.
Storage Instruction	Store at -80°C. Aliquot to avoid repeated freezing and thawing.
Note	Best use within three months from the date of receipt of this protein.

Applications

- Enzyme-linked Immunoabsorbent Assay
- Western Blot (Recombinant protein)
- Antibody Production
- Protein Array

Gene Info — MMP28

Entrez GeneID [79148](#)

GeneBank Accession# [NM_024302](#)

Protein Accession# [NP_077278](#)

Gene Name MMP28

Gene Alias EPILYSIN, MM28, MMP-28, MMP25

Gene Description matrix metalloproteinase 28

Omim ID [608417](#)

Gene Ontology [Hyperlink](#)

Gene Summary Proteins of the matrix metalloproteinase (MMP) family are involved in the breakdown of extracellular matrix for both normal physiological processes, such as embryonic development, reproduction and tissue remodeling, and disease processes, such as asthma and metastasis. This gene encodes a secreted enzyme that degrades casein. Its expression pattern suggests that it plays a role in tissue homeostasis and in wound repair. Transcript variants encoding different isoforms have been described. [provided by RefSeq]

Other Designations matrix metalloproteinase 28