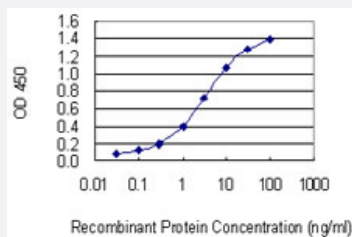


MMP28 monoclonal antibody (M01), clone 3C11

Catalog # H00079148-M01

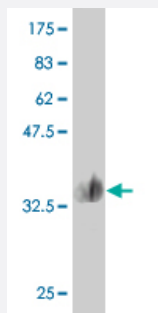
Size 100 ug

Applications



Sandwich ELISA (Recombinant protein)

Detection limit for recombinant GST tagged MMP28 is 0.03 ng/ml as a capture antibody.



Western Blot detection against Immunogen (34.54 KDa) .

Specification

Product Description	Mouse monoclonal antibody raised against a partial recombinant MMP28.
Immunogen	MMP28 (NP_077278, 441 a.a. ~ 520 a.a) partial recombinant protein with GST tag. MW of the GST tag alone is 26 KDa.
Sequence	LARGGLQVEPYYPRLQDWGGIPEEVSGALPRPDGSIIFRDDRYWRLDQAKLQATTSGRWATEL PWMGCWHANSGSALF
Host	Mouse
Reactivity	Human

Interspecies Antigen Sequence	Mouse (83)
Isotype	IgG2a Kappa
Quality Control Testing	Antibody Reactive Against Recombinant Protein. Western Blot detection against Immunogen (34.54 KDa) .
Storage Buffer	In 1x PBS, pH 7.4
Storage Instruction	Store at -20°C or lower. Aliquot to avoid repeated freezing and thawing.

Applications

- Western Blot (Recombinant protein)

[Protocol Download](#)

- Sandwich ELISA (Recombinant protein)

Detection limit for recombinant GST tagged MMP28 is 0.03 ng/ml as a capture antibody.

[Protocol Download](#)

- ELISA

Gene Info — MMP28

Entrez GeneID	79148
GeneBank Accession#	NM_024302
Protein Accession#	NP_077278
Gene Name	MMP28
Gene Alias	EPILYSIN, MM28, MMP-28, MMP25
Gene Description	matrix metallopeptidase 28
Omim ID	608417
Gene Ontology	Hyperlink

Gene Summary

Proteins of the matrix metalloproteinase (MMP) family are involved in the breakdown of extracellular matrix for both normal physiological processes, such as embryonic development, reproduction and tissue remodeling, and disease processes, such as asthma and metastasis. This gene encodes a secreted enzyme that degrades casein. Its expression pattern suggests that it plays a role in tissue homeostasis and in wound repair. Transcript variants encoding different isoforms have been described. [provided by RefSeq]

Other Designations

matrix metalloproteinase 28