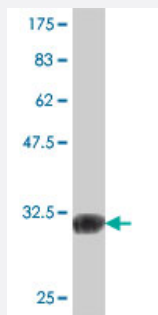


MMP28 polyclonal antibody (A01)

Catalog # H00079148-A01

Size 50 uL

Applications



Western Blot detection against Immunogen (34.91 KDa) .

Specification

Product Description	Mouse polyclonal antibody raised against a partial recombinant MMP28.
Immunogen	MMP28 (NP_077278, 441 a.a. ~ 520 a.a) partial recombinant protein with GST tag.
Sequence	LARGGLQVEPYYPRLQDWGGIPEEVSGALPRPDGSIIFRDDRYWRLDQAKLQATTSGRWATEL PWMGCWHANSGSALF
Host	Mouse
Reactivity	Human
Interspecies Antigen Sequence	Mouse (83)
Quality Control Testing	Antibody Reactive Against Recombinant Protein. Western Blot detection against Immunogen (34.91 KDa) .
Storage Buffer	50 % glycerol
Storage Instruction	Store at -20°C or lower. Aliquot to avoid repeated freezing and thawing.

Applications

- Western Blot (Recombinant protein)

[Protocol Download](#)

- ELISA

Gene Info — MMP28

Entrez GeneID [79148](#)

GeneBank Accession# [NM_024302](#)

Protein Accession# [NP_077278](#)

Gene Name MMP28

Gene Alias EPILYSIN, MM28, MMP-28, MMP25

Gene Description matrix metalloproteinase 28

Omim ID [608417](#)

Gene Ontology [Hyperlink](#)

Gene Summary Proteins of the matrix metalloproteinase (MMP) family are involved in the breakdown of extracellular matrix for both normal physiological processes, such as embryonic development, reproduction and tissue remodeling, and disease processes, such as asthma and metastasis. This gene encodes a secreted enzyme that degrades casein. Its expression pattern suggests that it plays a role in tissue homeostasis and in wound repair. Transcript variants encoding different isoforms have been described. [provided by RefSeq]

Other Designations matrix metalloproteinase 28