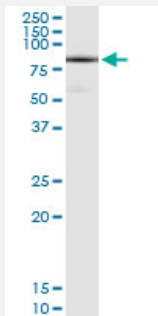


DHX58 (Human) IP-WB Antibody Pair

Catalog # H00079132-PW1

Size 1 Set

Applications



Immunoprecipitation of DHX58 transfected lysate using rabbit polyclonal anti-DHX58 and Protein A Magnetic Bead ([U0007](#)), and immunoblotted with mouse purified polyclonal anti-DHX58.

Specification

Product Description	This IP-WB antibody pair set comes with one antibody for immunoprecipitation and another to detect the precipitated protein in western blot.
Reactivity	Human
Interspecies Antigen Sequence	Mouse (78); Rat (79)
Quality Control Testing	Immunoprecipitation-Western Blot (IP-WB) Immunoprecipitation of DHX58 transfected lysate using rabbit polyclonal anti-DHX58 and Protein A Magnetic Bead (U0007), and immunoblotted with mouse purified polyclonal anti-DHX58.
Supplied Product	Antibody pair set content: 1. Antibody pair for IP: rabbit polyclonal anti-DHX58 (300 ul) 2. Antibody pair for WB: mouse purified polyclonal anti-DHX58 (50 ug)
Storage Instruction	Store reagents of the antibody pair set at -20°C or lower. Please aliquot to avoid repeated freeze thaw cycle. Reagents should be returned to -20°C storage immediately after use.

Applications

- Immunoprecipitation-Western Blot

[Protocol Download](#)

Gene Info — DHX58

Entrez GeneID	79132
Gene Name	DHX58
Gene Alias	D11LGP2, D11lgp2e, LGP2
Gene Description	DEXH (Asp-Glu-X-His) box polypeptide 58
Omim ID	608588
Gene Ontology	Hyperlink
Other Designations	RNA helicase LGP2 ortholog of mouse D11lgp2

Disease

- [Hepatitis C](#)