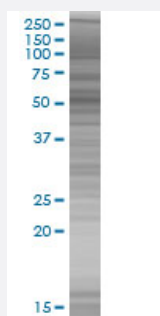


CARD14 293T Cell Transient Overexpression Lysate(Denatured)

Catalog # H00079092-T01

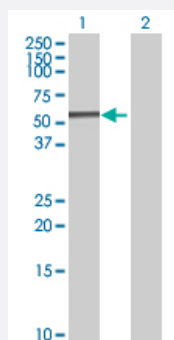
Size 100 uL

Applications



SDS-PAGE Gel

CARD14 transfected lysate.



Western Blot

Lane 1: CARD14 transfected lysate (47.85 KDa)

Lane 2: Non-transfected lysate.

Specification

Transfected Cell Line	293T
Plasmid	pCMV-CARD14 full-length
Host	Human
Theoretical MW (kDa)	47.85
Interspecies Antigen Sequence	Mouse (73)

Quality Control Testing

Transient overexpression cell lysate was tested with Anti-CARD14 antibody ([H00079092-B01](#)) by Western Blots.
SDS-PAGE Gel
CARD14 transfected lysate.
Western Blot
Lane 1: CARD14 transfected lysate (47.85 KDa)
Lane 2: Non-transfected lysate.

Storage Buffer

1X Sample Buffer (50 mM Tris-HCl, 2% SDS, 10% glycerol, 300 mM 2-mercaptoethanol, 0.01% Bromophenol blue)

Storage Instruction

Store at -80°C. Aliquot to avoid repeated freezing and thawing.

Applications

- Western Blot

Gene Info — CARD14

Entrez GeneID[79092](#)**GeneBank Accession#**[NM_052819](#)**Protein Accession#**[NP_438170](#)**Gene Name**

CARD14

Gene Alias

BIMP2, CARMA2

Gene Description

caspase recruitment domain family, member 14

Omim ID[607211](#)**Gene Ontology**[Hyperlink](#)**Gene Summary**

The protein encoded by this gene belongs to the membrane-associated guanylate kinase (MAGUK) family, a class of proteins that functions as molecular scaffolds for the assembly of multiprotein complexes at specialized regions of the plasma membrane. This protein is also a member of the CARD protein family, which is defined by carrying a characteristic caspase-associated recruitment domain (CARD). This protein shares a similar domain structure with CARD11 protein. The CARD domains of both proteins have been shown to specifically interact with BCL10, a protein known to function as a positive regulator of cell apoptosis and NF-kappaB activation. When expressed in cells, this protein activated NF-kappaB and induced the phosphorylation of BCL10. Two alternatively spliced variants of this gene encoding distinct isoforms have been reported. [provided by RefSeq]

Other Designations

CARD-containing MAGUK 2 protein|bcl10-interacting maguk protein 2|card-maguk protein 2|caspase recruitment domain protein 14

Disease

- [Cerebral Hemorrhage](#)
- [Genetic Predisposition to Disease](#)
- [Hypertension](#)
- [Intracranial Hemorrhages](#)
- [Stroke](#)
- [Subarachnoid Hemorrhage](#)