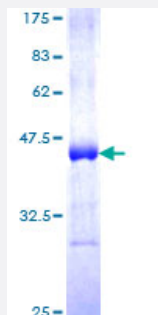


# CARD14 (Human) Recombinant Protein (Q02)

Catalog # H00079092-Q02

Size 25 ug, 10 ug

## Applications



## Specification

Product Description	Human CARD14 partial ORF ( NP_077015, 905 a.a. - 1004 a.a.) recombinant protein with GST-tag at N-terminal.
Sequence	VQLDSVCTLHRMDIFPVIHVSVNEKMAKKLKKGLQRLGTSEEQLLEAARQEEGDLDRAPCLYSSL APDGWSDLDGLLSCVRQAIADQKKVWTEQSPR
Host	Wheat Germ (in vitro)
Theoretical MW (kDa)	36.74
Interspecies Antigen Sequence	Mouse (73)
Preparation Method	<a href="#">in vitro wheat germ expression system</a>
Purification	Glutathione Sepharose 4 Fast Flow
Quality Control Testing	12.5% SDS-PAGE Stained with Coomassie Blue.
Storage Buffer	50 mM Tris-HCl, 10 mM reduced Glutathione, pH=8.0 in the elution buffer.
Storage Instruction	Store at -80°C. Aliquot to avoid repeated freezing and thawing.
Note	Best use within three months from the date of receipt of this protein.

## Applications

- Enzyme-linked Immunoabsorbent Assay
- Western Blot (Recombinant protein)
- Antibody Production
- Protein Array

## Gene Info — CARD14

Entrez GeneID [79092](#)

GeneBank Accession# [NM\\_024110](#)

Protein Accession# [NP\\_077015](#)

Gene Name CARD14

Gene Alias BIMP2, CARMA2

Gene Description caspase recruitment domain family, member 14

Omim ID [607211](#)

Gene Ontology [Hyperlink](#)

**Gene Summary**

The protein encoded by this gene belongs to the membrane-associated guanylate kinase (MAGUK) family, a class of proteins that functions as molecular scaffolds for the assembly of multiprotein complexes at specialized regions of the plasma membrane. This protein is also a member of the CARD protein family, which is defined by carrying a characteristic caspase-associated recruitment domain (CARD). This protein shares a similar domain structure with CARD11 protein. The CARD domains of both proteins have been shown to specifically interact with BCL10, a protein known to function as a positive regulator of cell apoptosis and NF-kappaB activation. When expressed in cells, this protein activated NF-kappaB and induced the phosphorylation of BCL10. Two alternatively spliced variants of this gene encoding distinct isoforms have been reported. [provided by RefSeq]

**Other Designations**

CARD-containing MAGUK 2 protein|bcl10-interacting maguk protein 2|card-maguk protein 2|caspase recruitment domain protein 14

## Disease

- [Cerebral Hemorrhage](#)
- [Genetic Predisposition to Disease](#)
- [Hypertension](#)
- [Intracranial Hemorrhages](#)
- [Stroke](#)
- [Subarachnoid Hemorrhage](#)