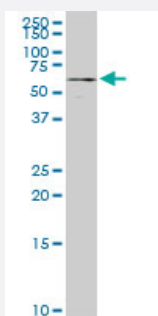


ALG12 monoclonal antibody (M06), clone 5E3

Catalog # H00079087-M06

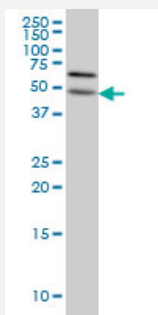
Size 100 ug

Applications



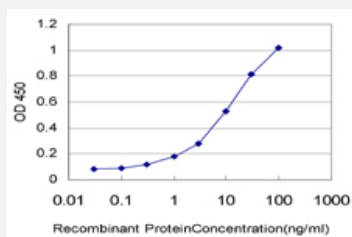
Western Blot (Cell lysate)

ALG12 monoclonal antibody (M06), clone 5E3. Western Blot analysis of ALG12 expression in PC-12 (Cat # L012V1).



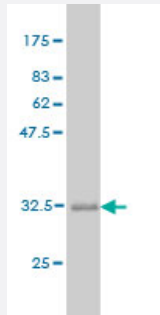
Western Blot (Cell lysate)

ALG12 monoclonal antibody (M06), clone 5E3 Western Blot analysis of ALG12 expression in HeLa (Cat # L013V1).



Sandwich ELISA (Recombinant protein)

Detection limit for recombinant GST tagged ALG12 is approximately 0.3ng/ml as a capture antibody.



Western Blot detection against Immunogen (32.01 KDa) .

Specification

Product Description	Mouse monoclonal antibody raised against a partial recombinant ALG12.
Immunogen	ALG12 (NP_077010, 369 a.a. ~ 425 a.a) partial recombinant protein with GST tag. MW of the GST tag alone is 26 KDa.
Sequence	NYPGGVAMQRLHQLVPPQTDVLLHIDVAAAQTGVSRLFQVNSAWRYDKREDVQPGTG
Host	Mouse
Reactivity	Human, Rat
Interspecies Antigen Sequence	Mouse (78); Rat (78)
Isotype	IgG1 Kappa
Quality Control Testing	Antibody Reactive Against Recombinant Protein. Western Blot detection against Immunogen (32.01 KDa) .
Storage Buffer	In 1x PBS, pH 7.4
Storage Instruction	Store at -20°C or lower. Aliquot to avoid repeated freezing and thawing.

Applications

- Western Blot (Cell lysate)

ALG12 monoclonal antibody (M06), clone 5E3. Western Blot analysis of ALG12 expression in PC-12 (Cat # L012V1).

[Protocol Download](#)

- Western Blot (Cell lysate)

ALG12 monoclonal antibody (M06), clone 5E3 Western Blot analysis of ALG12 expression in HeLa (Cat # L013V1).

[Protocol Download](#)

- Western Blot (Recombinant protein)

[Protocol Download](#)

- Sandwich ELISA (Recombinant protein)

Detection limit for recombinant GST tagged ALG12 is approximately 0.3ng/ml as a capture antibody.

[Protocol Download](#)

- ELISA

Gene Info — ALG12

Entrez GeneID [79087](#)

GeneBank Accession# [NM_024105](#)

Protein Accession# [NP_077010](#)

Gene Name ALG12

Gene Alias ECM39, MGC111358, MGC3136, PP14673, hALG12

Gene Description asparagine-linked glycosylation 12, alpha-1,6-mannosyltransferase homolog (S. cerevisiae)

Omim ID [607143 607144](#)

Gene Ontology [Hyperlink](#)

Gene Summary This gene encodes a member of the glycosyltransferase 22 family. The encoded protein catalyzes the addition of the eighth mannose residue in an alpha-1,6 linkage onto the dolichol-PP-oligosaccharide precursor (dolichol-PP-Man(7)GlcNAc(2)) required for protein glycosylation. Mutations in this gene have been associated with congenital disorder of glycosylation type Ig (CDG-Ig) characterized by abnormal N-glycosylation. [provided by RefSeq]

Other Designations alpha-1,6-mannosyltransferase ALG12|asparagine-linked glycosylation 12 homolog (S. cerevisiae, alpha-1,6-mannosyltransferase)|asparagine-linked glycosylation 12 homolog (yeast, alpha-1,6-mannosyltransferase)|dolichyl-P-mannose:Man-7-GlcNAc-2-PP-dolichyl-a

Pathway

- [Metabolic pathways](#)
- [N-Glycan biosynthesis](#)