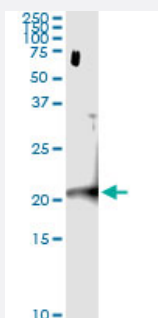


CENPM (Human) IP-WB Antibody Pair

Catalog # H00079019-PW2

Size 1 Set

Applications



Immunoprecipitation of CENPM transfected lysate using mouse monoclonal anti-CENPM and Protein A Magnetic Bead ([U0007](#)), and immunoblotted with rabbit polyclonal anti-CENPM.

Specification

Product Description	This IP-WB antibody pair set comes with one antibody for immunoprecipitation and another to detect the precipitated protein in western blot.
Reactivity	Human
Interspecies Antigen Sequence	Mouse (79); Rat (80)
Quality Control Testing	Immunoprecipitation-Western Blot (IP-WB) Immunoprecipitation of CENPM transfected lysate using mouse monoclonal anti-CENPM and Protein A Magnetic Bead (U0007), and immunoblotted with rabbit polyclonal anti-CENPM.
Supplied Product	Antibody pair set content: 1. Antibody pair for IP: mouse monoclonal anti-CENPM (300 ug) 2. Antibody pair for WB: rabbit polyclonal anti-CENPM (50 ul)
Storage Instruction	Store reagents of the antibody pair set at -20°C or lower. Please aliquot to avoid repeated freeze thaw cycle. Reagents should be returned to -20°C storage immediately after use.

Applications

- Immunoprecipitation-Western Blot

[Protocol Download](#)

Gene Info — CENPM

Entrez GeneID [79019](#)

Gene Name CENPM

Gene Alias C22orf18, CENP-M, MGC861, PANE1, bK250D10.2

Gene Description centromere protein M

Omim ID [610152](#)

Gene Ontology [Hyperlink](#)

Gene Summary The centromere is a specialized chromatin domain, present throughout the cell cycle, that acts as a platform on which the transient assembly of the kinetochore occurs during mitosis. All active centromeres are characterized by the presence of long arrays of nucleosomes in which CENPA (MIM 117139) replaces histone H3 (see MIM 601128). CENPM is an additional factor required for centromere assembly (Foltz et al., 2006 [PubMed 16622419]).[supplied by OMIM]

Other Designations OTTHUMP00000028741|proliferation associated nuclear element 1

Disease

- [Genetic Predisposition to Disease](#)
- [Hematologic Diseases](#)
- [Occupational Diseases](#)