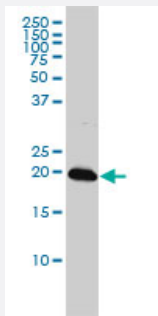


CENPM monoclonal antibody (M01), clone 4C12-2C8

Catalog # H00079019-M01

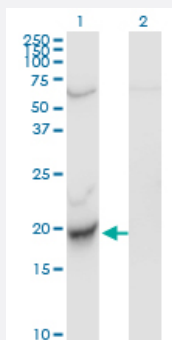
Size 100 ug

Applications



Western Blot (Cell lysate)

C22orf18 monoclonal antibody (M01), clone 4C12-2C8 Western Blot analysis of C22orf18 expression in K-562 (Cat # L009V1).

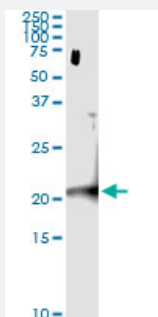


Western Blot (Transfected lysate)

Western Blot analysis of CENPM expression in transfected 293T cell line by C22orf18 monoclonal antibody (M01), clone 4C12-2C8.

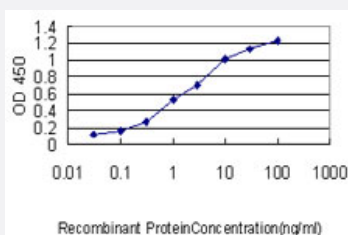
Lane 1: CENPM transfected lysate (Predicted MW: 19.7 KDa).

Lane 2: Non-transfected lysate.



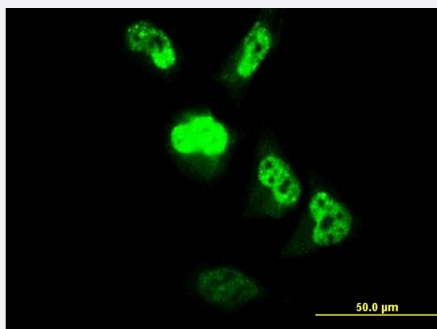
Immunoprecipitation

Immunoprecipitation of CENPM transfected lysate using anti-CENPM monoclonal antibody and Protein A Magnetic Bead, and immunoblotted with CENPM MaxPab rabbit polyclonal antibody.



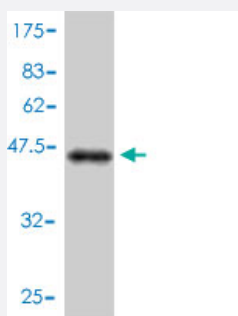
Sandwich ELISA (Recombinant protein)

Detection limit for recombinant GST tagged C22orf18 is approximately 0.03ng/ml as a capture antibody.



Immunofluorescence

Immunofluorescence of monoclonal antibody to MGC861 on HeLa cell.
[antibody concentration 10 ug/ml]



Western Blot detection against Immunogen (45.54 KDa) .

Specification

Product Description	Mouse monoclonal antibody raised against a full length recombinant CENPM.
Immunogen	CENPM (AAH00705, 1 a.a. ~ 180 a.a) full-length recombinant protein with GST tag. MW of the GST tag alone is 26 KDa.
Sequence	MSVLRPLDKLPGLNTATILLVGTEDALLQQQLADSMKEDCASELKVHLAKSLPLPSSVNRPRIDLIVFVVNLHSKYSLQNTTEESLRHVDASFLLGKVCFLATGAGRESHCSHRHTVVKLAHTYQSPLLYCDLEVEGFRATMAQRLVRVLQICAGHVPGVSA LNLLSLLRSSEGPSLEDL
Host	Mouse
Reactivity	Human
Interspecies Antigen Sequence	Mouse (79); Rat (80)
Isotype	IgG1 kappa
Quality Control Testing	Antibody Reactive Against Recombinant Protein. Western Blot detection against Immunogen (45.54 KDa) .
Storage Buffer	In 1x PBS, pH 7.4
Storage Instruction	Store at -20°C or lower. Aliquot to avoid repeated freezing and thawing.

Applications

- Western Blot (Cell lysate)

C22orf18 monoclonal antibody (M01), clone 4C12-2C8 Western Blot analysis of C22orf18 expression in K-562 (Cat # L009V1).

[Protocol Download](#)

- Western Blot (Transfected lysate)

Western Blot analysis of CENPM expression in transfected 293T cell line by C22orf18 monoclonal antibody (M01), clone 4C12-2C8.

Lane 1: CENPM transfected lysate (Predicted MW: 19.7 KDa).

Lane 2: Non-transfected lysate.

[Protocol Download](#)

- Western Blot (Recombinant protein)

[Protocol Download](#)

- Immunoprecipitation

Immunoprecipitation of CENPM transfected lysate using anti-CENPM monoclonal antibody and Protein A Magnetic Bead, and immunoblotted with CENPM MaxPab rabbit polyclonal antibody.

[Protocol Download](#)

- Sandwich ELISA (Recombinant protein)

Detection limit for recombinant GST tagged C22orf18 is approximately 0.03ng/ml as a capture antibody.

[Protocol Download](#)

- ELISA

- Immunofluorescence

Immunofluorescence of monoclonal antibody to MGC861 on HeLa cell. [antibody concentration 10 ug/ml]

Gene Info — CENPM

Entrez GeneID [79019](#)

GeneBank Accession# [BC000705](#)

Protein Accession#	AAH00705
Gene Name	CENPM
Gene Alias	C22orf18, CENP-M, MGC861, PANE1, bK250D10.2
Gene Description	centromere protein M
Omim ID	610152
Gene Ontology	Hyperlink
Gene Summary	The centromere is a specialized chromatin domain, present throughout the cell cycle, that acts as a platform on which the transient assembly of the kinetochore occurs during mitosis. All active centromeres are characterized by the presence of long arrays of nucleosomes in which CENPA (MIM 117139) replaces histone H3 (see MIM 601128). CENPM is an additional factor required for centromere assembly (Foltz et al., 2006 [PubMed 16622419]).[supplied by OMIM]
Other Designations	OTTHUMP00000028741 proliferation associated nuclear element 1

Disease

- [Genetic Predisposition to Disease](#)
- [Hematologic Diseases](#)
- [Occupational Diseases](#)