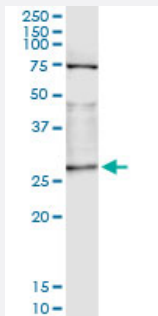


OTUB2 (Human) IP-WB Antibody Pair

Catalog # H00078990-PW1

Size 1 Set

Applications



Immunoprecipitation of OTUB2 transfected lysate using mouse monoclonal anti-OTUB2 and Protein A Magnetic Bead ([U0007](#)), and immunoblotted with rabbit polyclonal anti-OTUB2.

Specification

Product Description	This IP-WB antibody pair set comes with one antibody for immunoprecipitation and another to detect the precipitated protein in western blot.
Reactivity	Human
Interspecies Antigen Sequence	Mouse (94); Rat (94)
Quality Control Testing	Immunoprecipitation-Western Blot (IP-WB) Immunoprecipitation of OTUB2 transfected lysate using mouse monoclonal anti-OTUB2 and Protein A Magnetic Bead (U0007), and immunoblotted with rabbit polyclonal anti-OTUB2.
Supplied Product	Antibody pair set content: 1. Antibody pair for IP: mouse monoclonal anti-OTUB2 (300 ug) 2. Antibody pair for WB: rabbit polyclonal anti-OTUB2 (50 ul)
Storage Instruction	Store reagents of the antibody pair set at -20°C or lower. Please aliquot to avoid repeated freeze thaw cycle. Reagents should be returned to -20°C storage immediately after use.

Applications

- Immunoprecipitation-Western Blot

[Protocol Download](#)

Gene Info — OTUB2

Entrez GeneID	78990
---------------	-----------------------

Gene Name	OTUB2
-----------	-------

Gene Alias	C14orf137, FLJ21916, MGC3102, OTB2, OTU2
------------	--

Gene Description	OTU domain, ubiquitin aldehyde binding 2
------------------	--

Omim ID	608338
---------	------------------------

Gene Ontology	Hyperlink
---------------	---------------------------

Gene Summary	Otubains are deubiquitylating cysteine proteases (DUBs; see MIM 602519) that belong to the ovarian tumor (OTU) protein superfamily. Like other DUBs, otubains cleave proteins precisely at the ubiquitin (UB; see MIM 191339)-protein bond.[supplied by OMIM]
--------------	---

Other Designations	ubiquitin-specific protease otubain 2
--------------------	---------------------------------------