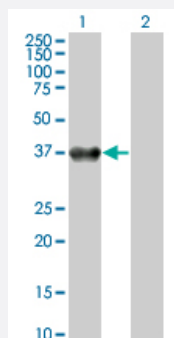


BOLL monoclonal antibody (M06), clone 2E8

Catalog # H00066037-M06

Size 100 ug

Applications

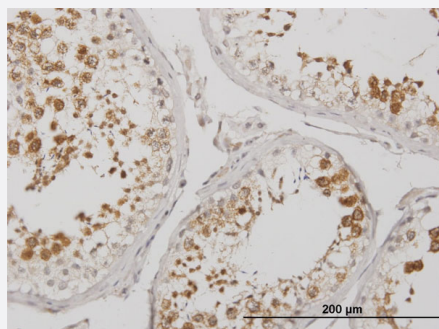


Western Blot (Transfected lysate)

Western Blot analysis of BOLL expression in transfected 293T cell line by BOLL monoclonal antibody (M06), clone 2E8.

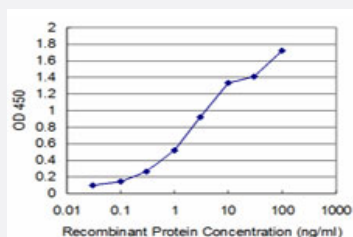
Lane 1: BOLL transfected lysate(31.301 KDa).

Lane 2: Non-transfected lysate.



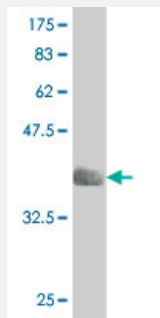
Immunohistochemistry (Formalin/PFA-fixed paraffin-embedded sections)

Immunoperoxidase of monoclonal antibody to BOLL on formalin-fixed paraffin-embedded human testis. [antibody concentration 1.2 ug/ml]



Sandwich ELISA (Recombinant protein)

Detection limit for recombinant GST tagged BOLL is approximately 0.3ng/ml as a capture antibody.



Western Blot detection against Immunogen (36.63 KDa) .

Specification

Product Description	Mouse monoclonal antibody raised against a partial recombinant BOLL.
Immunogen	BOLL (NP_149019, 185 a.a. ~ 283 a.a) partial recombinant protein with GST tag. MW of the GST tag alone is 26 KDa.
Sequence	ATTQYLPGQWQWSVPQPSASSAPFLYLQPSEVIYQPVEIAQDGGCVPPPLSLMETSVPEPYSDH GVQATYHQVYAPSAITMPAPVMQPEPIKTVWSIH
Host	Mouse
Reactivity	Human
Interspecies Antigen Sequence	Mouse (92); Rat (92)
Isotype	IgG2a Kappa
Quality Control Testing	Antibody Reactive Against Recombinant Protein. Western Blot detection against Immunogen (36.63 KDa) .
Storage Buffer	In 1x PBS, pH 7.4
Storage Instruction	Store at -20°C or lower. Aliquot to avoid repeated freezing and thawing.

Applications

● Western Blot (Transfected lysate)

Western Blot analysis of BOLL expression in transfected 293T cell line by BOLL monoclonal antibody (M06), clone 2E8.

Lane 1: BOLL transfected lysate(31.301 KDa).

Lane 2: Non-transfected lysate.

[Protocol Download](#)

- Western Blot (Recombinant protein)

[Protocol Download](#)

- Immunohistochemistry (Formalin/PFA-fixed paraffin-embedded sections)

Immunoperoxidase of monoclonal antibody to BOLL on formalin-fixed paraffin-embedded human testis. [antibody concentration 1.2 ug/ml]

[Protocol Download](#)

- Sandwich ELISA (Recombinant protein)

Detection limit for recombinant GST tagged BOLL is approximately 0.3ng/ml as a capture antibody.

[Protocol Download](#)

- ELISA

Gene Info — BOLL

Entrez GeneID [66037](#)

GeneBank Accession# [NM_033030](#)

Protein Accession# [NP_149019](#)

Gene Name BOLL

Gene Alias -

Gene Description bol, boule-like (Drosophila)

Omim ID [606165](#)

Gene Ontology [Hyperlink](#)

Gene Summary This gene belongs to the DAZ gene family required for germ cell development. It encodes an RNA-binding protein which is more similar to Drosophila Boule than to human proteins encoded by genes DAZ (deleted in azoospermia) or DAZL (deleted in azoospermia-like). Loss of this gene function results in the absence of sperm in semen (azoospermia). Histological studies demonstrated that the primary defect is at the meiotic G2/M transition. Two alternatively spliced transcript variants encoding distinct isoforms have been found for this gene. [provided by RefSeq]

Other Designations boule

Disease

- [Azoospermia](#)
- [Infertility](#)
- [Oligospermia](#)