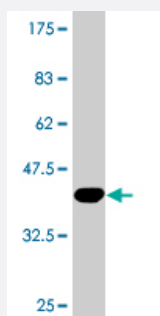


MTMR9 monoclonal antibody (M01), clone 4A9

Catalog # H00066036-M01

Size 100 ug

Applications



Western Blot detection against Immunogen (36.74 KDa) .

Specification

Product Description	Mouse monoclonal antibody raised against a partial recombinant MTMR9.
Immunogen	MTMR9 (NP_056273, 450 a.a. ~ 549 a.a) partial recombinant protein with GST tag. MW of the GST tag alone is 26 KDa.
Sequence	LQQKTMSLWSWVNQPSELSKFTNPLFEANNLVWPSVAPQSLPLWEGIFLRWNRSSKYLDEAYE EMVNIIEYNKELQAKVNILRRQLAELETEDGMQESP
Host	Mouse
Reactivity	Human
Interspecies Antigen Sequence	Mouse (95); Rat (95)
Isotype	IgG2a Kappa
Quality Control Testing	Antibody Reactive Against Recombinant Protein. Western Blot detection against Immunogen (36.74 KDa) .
Storage Buffer	In 1x PBS, pH 7.4
Storage Instruction	Store at -20°C or lower. Aliquot to avoid repeated freezing and thawing.

Applications

- Western Blot (Recombinant protein)

[Protocol Download](#)

- ELISA

Gene Info — MTMR9

Entrez GeneID [66036](#)

GeneBank Accession# [NM_015458](#)

Protein Accession# [NP_056273](#)

Gene Name MTMR9

Gene Alias C8orf9, DKFZp434K171, LIP-STYX, MGC126672, MTMR8

Gene Description myotubularin related protein 9

Omim ID [606260](#)

Gene Ontology [Hyperlink](#)

Gene Summary This gene encodes a myotubularin-related protein that is atypical to most other members of the myotubularin-related protein family because it has no dual-specificity phosphatase domain. The encoded protein contains a double-helical motif similar to the SET interaction domain, which is thought to have a role in the control of cell proliferation. In mouse, a protein similar to the encoded protein binds with MTMR7, and together they dephosphorylate phosphatidylinositol 3-phosphate and inositol 1,3-bisphosphate. [provided by RefSeq]

Other Designations myotubularin related protein 8|myotubularin-related protein 9

Disease

- [Birth Weight](#)
- [Cardiovascular Diseases](#)
- [Diabetes Mellitus](#)

- [Obesity](#)