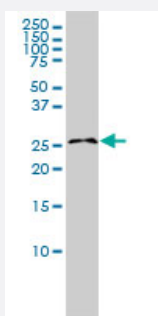


# RASL11B monoclonal antibody (M01), clone 1B5

Catalog # H00065997-M01

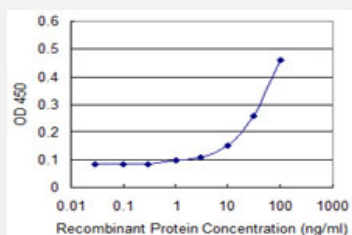
Size 100 ug

## Applications



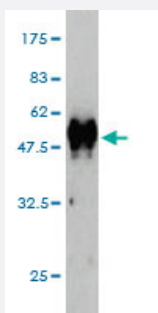
### Western Blot (Cell lysate)

RASL11B monoclonal antibody (M01), clone 1B5 Western Blot analysis of RASL11B expression in K-562 ( Cat # L009V1 ).



### Sandwich ELISA (Recombinant protein)

Detection limit for recombinant GST tagged RASL11B is approximately 3ng/ml as a capture antibody.



Western Blot detection against Immunogen (53.02 KDa) .

## Specification

### Product Description

Mouse monoclonal antibody raised against a full length recombinant RASL11B.

<b>Immunogen</b>	RASL11B (AAH25694, 1 a.a. ~ 248 a.a) full-length recombinant protein with GST tag. MW of the GST tag alone is 26 KDa.
<b>Sequence</b>	MRLIQNMCTIAEYPAPGNAAASDCCVGAAGRRLVKIAVVGASGVGKTALVVRFLTKRFIGDYERNA GNLYTRQVQIEGETLALQVQDTPGIQVHENSLSCEQLNRCIRWADAVVIVFSITDYKSYELISQLHQ HVQQLHLGTRLPVVVVANKADLLHIKQVDPQLGLQLASMLGCSFYEVSVSENYNDVYSAFHLCK EVSHKQQPSSTPEKRRTSLIPRPKSPNMQDLKRRFKQALSAKVRTVTSV
<b>Host</b>	Mouse
<b>Reactivity</b>	Human
<b>Interspecies Antigen Sequence</b>	Mouse (94); Rat (94)
<b>Isotype</b>	IgG1 kappa
<b>Quality Control Testing</b>	Antibody Reactive Against Recombinant Protein. Western Blot detection against Immunogen (53.02 KDa) .
<b>Storage Buffer</b>	In 1x PBS, pH 7.4
<b>Storage Instruction</b>	Store at -20°C or lower. Aliquot to avoid repeated freezing and thawing.

## Applications

- Western Blot (Cell lysate)

RASL11B monoclonal antibody (M01), clone 1B5 Western Blot analysis of RASL11B expression in K-562 ( Cat # L009V1 ).

[Protocol Download](#)

- Western Blot (Recombinant protein)

[Protocol Download](#)

- Sandwich ELISA (Recombinant protein)

Detection limit for recombinant GST tagged RASL11B is approximately 3ng/ml as a capture antibody.

[Protocol Download](#)

- ELISA

## Gene Info — RASL11B

Entrez GeneID	<a href="#">65997</a>
GeneBank Accession#	<a href="#">BC025694</a>
Protein Accession#	<a href="#">AAH25694</a>
Gene Name	RASL11B
Gene Alias	MGC2827, MGC4499
Gene Description	RAS-like, family 11, member B
Gene Ontology	<a href="#">Hyperlink</a>
Gene Summary	RASL11B is a member of the small GTPase protein family with a high degree of similarity to RAS (see HRAS, MIM 190020) proteins.[supplied by OMIM]
Other Designations	RAS-like family 11 member B