

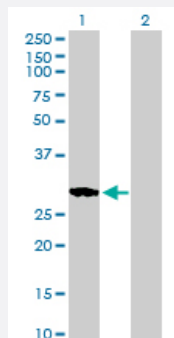
MaxPab®

# RASL11B purified MaxPab mouse polyclonal antibody (B01P)

Catalog # H00065997-B01P

Size 50 ug

## Applications



### Western Blot (Transfected lysate)

Western Blot analysis of RASL11B expression in transfected 293T cell line ([H00065997-T02](#)) by RASL11B MaxPab polyclonal antibody.

Lane 1: RASL11B transfected lysate(27.28 KDa).

Lane 2: Non-transfected lysate.

## Specification

Product Description	Mouse polyclonal antibody raised against a full-length human RASL11B protein.
Immunogen	RASL11B (NP_076429.1, 1 a.a. ~ 248 a.a) full-length human protein.
Sequence	MRLIQNMCTIAEYPAPGNAAASDCCVGAAGRRLVKIAVVGASGVGKTALVVRFLTKRFIGDYERNA GNLYTRQVQIEGETLALQVQDTPGIQVHENSLSQSEQLNRCIRWADAVVIVFSITDYKSYELISQLHQ HVQQLHLGTRLPVVVVANKADLLHIKQVDPQLGLQLASMLGCSFYEVSVSENYNDVYSAFHVLCK EVSHKQQPSSTPEKRRTSLIPRPKSPNMQDLKRRFKQALSAKVRTVTSV
Host	Mouse
Reactivity	Human
Interspecies Antigen Sequence	Mouse (94); Rat (94)
Quality Control Testing	Antibody reactive against mammalian transfected lysate.
Storage Buffer	In 1x PBS, pH 7.4
Storage Instruction	Store at -20°C or lower. Aliquot to avoid repeated freezing and thawing.

## Applications

- Western Blot (Transfected lysate)

Western Blot analysis of RASL11B expression in transfected 293T cell line ([H00065997-T02](#)) by RASL11B MaxPab polyclonal antibody.

Lane 1: RASL11B transfected lysate(27.28 KDa).

Lane 2: Non-transfected lysate.

[Protocol Download](#)

## Gene Info — RASL11B

Entrez GeneID	<a href="#">65997</a>
---------------	-----------------------

GeneBank Accession#	<a href="#">NM_023940</a>
---------------------	---------------------------

Protein Accession#	<a href="#">NP_076429.1</a>
--------------------	-----------------------------

Gene Name	RASL11B
-----------	---------

Gene Alias	MGC2827, MGC4499
------------	------------------

Gene Description	RAS-like, family 11, member B
------------------	-------------------------------

Gene Ontology	<a href="#">Hyperlink</a>
---------------	---------------------------

Gene Summary	RASL11B is a member of the small GTPase protein family with a high degree of similarity to RAS (see HRAS, MIM 190020) proteins.[supplied by OMIM]
--------------	---

Other Designations	RAS-like family 11 member B
--------------------	-----------------------------