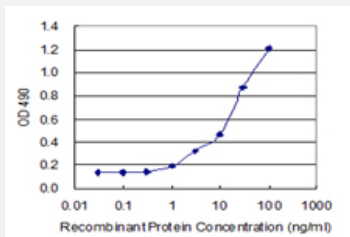


ZSCAN18 (Human) Matched Antibody Pair

Catalog # H00065982-AP22 Size 1 Set

Applications



Sandwich ELISA detection sensitivity ranging from 1 ng/ml to 100 ng/ml.

Specification

Product Description	This antibody pair set comes with a matched antibody pair to detect and quantify the protein level of human ZSCAN18.
Reactivity	Human
Interspecies Antigen Sequence	Mouse (51)
Quality Control Testing	Standard curve using recombinant protein (H00065982-P01) as an analyte. Sandwich ELISA detection sensitivity ranging from 1 ng/ml to 100 ng/ml.
Supplied Product	Antibody pair set content: 1. Capture antibody: rabbit MaxPab® affinity purified polyclonal anti-ZSCAN18 (100 ug) 2. Detection antibody: mouse purified polyclonal anti-ZSCAN18 (20 ug) *Reagents are sufficient for at least 1-2 x 96 well plates using recommended protocols.
Storage Instruction	Store reagents of the antibody pair set at -20°C or lower. Please aliquot to avoid repeated freeze thaw cycle. Reagents should be returned to -20°C storage immediately after use.

Applications

- ELISA Pair (Recombinant protein)

[Protocol Download](#)

Gene Info — ZSCAN18

Entrez GeneID	65982
Gene Name	ZSCAN18
Gene Alias	DKFZp586B1122, FLJ12895, FLJ44152, MGC2427, MGC4074, MGC8682, ZNF447
Gene Description	zinc finger and SCAN domain containing 18
Gene Ontology	Hyperlink
Other Designations	zinc finger protein 447