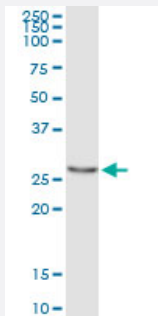


PYCRL (Human) IP-WB Antibody Pair

Catalog # H00065263-PW3

Size 1 Set

Applications



Immunoprecipitation of PYCRL transfected lysate using mouse monoclonal anti-PYCRL and Protein A Magnetic Bead ([U0007](#)), and immunoblotted with mouse monoclonal anti-PYCRL.

Specification

Product Description	This IP-WB antibody pair set comes with one antibody for immunoprecipitation and another to detect the precipitated protein in western blot.
Reactivity	Human
Interspecies Antigen Sequence	Mouse (82); Rat (82)
Quality Control Testing	Immunoprecipitation-Western Blot (IP-WB) Immunoprecipitation of PYCRL transfected lysate using mouse monoclonal anti-PYCRL and Protein A Magnetic Bead (U0007), and immunoblotted with mouse monoclonal anti-PYCRL.
Supplied Product	Antibody pair set content: 1. Antibody pair for IP: mouse monoclonal anti-PYCRL (300 ug) 2. Antibody pair for WB: mouse monoclonal anti-PYCRL (50 ug)
Storage Instruction	Store reagents of the antibody pair set at -20°C or lower. Please aliquot to avoid repeated freeze thaw cycle. Reagents should be returned to -20°C storage immediately after use.

Applications

- Immunoprecipitation-Western Blot

[Protocol Download](#)

Gene Info — PYCRL

Entrez GeneID	65263
Gene Name	PYCRL
Gene Alias	FLJ13852
Gene Description	pyrroline-5-carboxylate reductase-like
Gene Ontology	Hyperlink
Other Designations	-

Pathway

- [Arginine and proline metabolism](#)
- [Metabolic pathways](#)