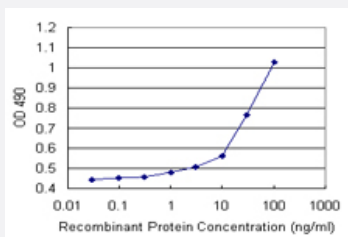


NADK (Human) Matched Antibody Pair

Catalog # H00065220-AP11 Size 1 Set

Applications



Sandwich ELISA detection sensitivity ranging from 1 ng/ml to 100 ng/ml.

Specification

Product Description	This antibody pair set comes with a matched antibody pair to detect and quantify the protein level of human NADK.
Reactivity	Human
Interspecies Antigen Sequence	Mouse (91); Rat (91)
Quality Control Testing	Standard curve using recombinant protein (H00065220-P01) as an analyte. Sandwich ELISA detection sensitivity ranging from 1 ng/ml to 100 ng/ml.
Supplied Product	Antibody pair set content: 1. Capture antibody: rabbit MaxPab® affinity purified polyclonal anti-NADK (100 ug) 2. Detection antibody: mouse monoclonal anti-NADK, IgG2a Kappa (20 ug) *Reagents are sufficient for at least 1-2 x 96 well plates using recommended protocols.
Storage Instruction	Store reagents of the antibody pair set at -20°C or lower. Please aliquot to avoid repeated freeze thaw cycle. Reagents should be returned to -20°C storage immediately after use.

Applications

- ELISA Pair (Recombinant protein)

[Protocol Download](#)

Gene Info — NADK

Entrez GeneID [65220](#)

Gene Name NADK

Gene Alias FLJ13052, FLJ37724, dJ283E3.1

Gene Description NAD kinase

Omim ID [611616](#)

Gene Ontology [Hyperlink](#)

Gene Summary NADK catalyzes the transfer of a phosphate group from ATP to NAD to generate NADP, which in its reduced form acts as an electron donor for biosynthetic reactions (Lerner et al., 2001 [PubMed 11594753]).[supplied by OMIM]

Other Designations OTTHUMP00000001110|OTTHUMP00000001111

Pathway

- [Metabolic pathways](#)
- [Nicotinate and nicotinamide metabolism](#)

Disease

- [Tobacco Use Disorder](#)