

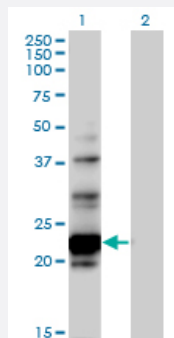
MaxPab®

# NOL6 purified MaxPab mouse polyclonal antibody (B01P)

Catalog # H00065083-B01P

Size 50 ug

## Applications

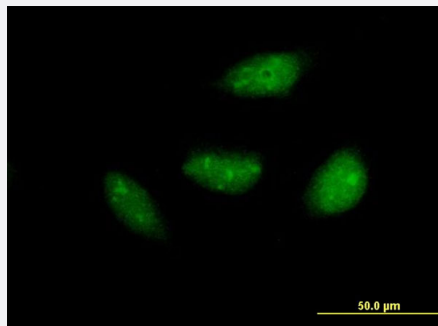


### Western Blot (Transfected lysate)

Western Blot analysis of NOL6 expression in transfected 293T cell line ([H00065083-T01](#)) by NOL6 MaxPab polyclonal antibody.

Lane 1: NOL6 transfected lysate(22.11 KDa).

Lane 2: Non-transfected lysate.



### Immunofluorescence

Immunofluorescence of purified MaxPab antibody to NOL6 on HeLa cell. [antibody concentration 10 ug/ml]

## Specification

Product Description	Mouse polyclonal antibody raised against a full-length human NOL6 protein.
Immunogen	NOL6 (AAH08298, 1 a.a. ~ 200 a.a) full-length human protein.
Sequence	MVIVTPQDRKNSVWTQDGPSAQILQQLVVLAAEALPMLEKQLMDPRGPGDIRTVFRPPLDMDVLI RLSPRHIPRHRQAVDSPAASFGRLLSQPGPSSLMFVLGYDPPQLYLTQLREAFGDALFFYDQH GGEVIGVLWKPTSFPQPFKASSTKGRMVMSRGGELVMVPNVEAILEDFAVLGEGLVQTVARS ERWTV
Host	Mouse
Reactivity	Human

Interspecies Antigen Sequence	Mouse (84); Rat (86)
Quality Control Testing	Antibody reactive against mammalian transfected lysate.
Storage Buffer	In 1x PBS, pH 7.4
Storage Instruction	Store at -20°C or lower. Aliquot to avoid repeated freezing and thawing.

## Applications

- Western Blot (Transfected lysate)

Western Blot analysis of NOL6 expression in transfected 293T cell line ([H00065083-T01](#)) by NOL6 MaxPab polyclonal antibody.

Lane 1: NOL6 transfected lysate(22.11 KDa).

Lane 2: Non-transfected lysate.

[Protocol Download](#)

- Immunofluorescence

Immunofluorescence of purified MaxPab antibody to NOL6 on HeLa cell. [antibody concentration 10 ug/ml]

## Gene Info — NOL6

Entrez GeneID	<a href="#">65083</a>
GeneBank Accession#	<a href="#">BC008298</a>
Protein Accession#	<a href="#">AAH08298</a>
Gene Name	NOL6
Gene Alias	FLJ21959, MGC14896, MGC14921, MGC20838, NRAP, UTP22, bA311H10.1
Gene Description	nucleolar protein family 6 (RNA-associated)
Omim ID	<a href="#">611532</a>
Gene Ontology	<a href="#">Hyperlink</a>

**Gene Summary**

The nucleolus is a dense subnuclear membraneless organelle that assembles around clusters of rRNA genes and functions in ribosome biogenesis. This gene encodes a nucleolar RNA-associated protein that is highly conserved between species. RNase treatment of permeabilized cells indicates that the nucleolar localization is RNA dependent. Further studies suggest that the protein is associated with ribosome biogenesis through an interaction with pre-rRNA primary transcripts. Alternative splicing has been observed at this locus and two splice variants encoding distinct isoforms have been identified. [provided by RefSeq]

**Other Designations**

OTTHUMP00000000449|OTTHUMP00000000450|OTTHUMP00000000451|OTTHUMP00000000452|nucleolar protein family 6