

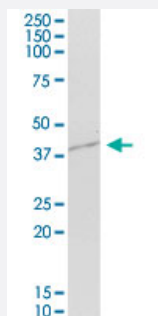
MaxPab®

MRPL44 MaxPab mouse polyclonal antibody (B01P)

Catalog # H00065080-B01P

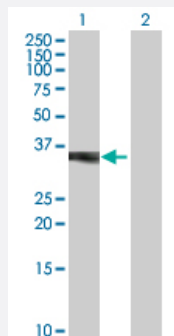
Size 50 ug

Applications



Western Blot (Tissue lysate)

MRPL44 MaxPab polyclonal antibody. Western Blot analysis of MRPL44 expression in human kidney.



Western Blot (Transfected lysate)

Western Blot analysis of MRPL44 expression in transfected 293T cell line ([H00065080-T01](#)) by MRPL44 MaxPab polyclonal antibody.

Lane 1: MRPL44 transfected lysate(37.50 KDa).

Lane 2: Non-transfected lysate.

Specification

Product Description

Mouse polyclonal antibody raised against a full-length human MRPL44 protein.

Immunogen

MRPL44 (NP_075066.1, 1 a.a. ~ 332 a.a) full-length human protein.

Sequence

MASGLVRLQLQQGHRCLLAPVAPKLVPPVRGVKKGFRAAFRFQKELERQRLLRCPPPPVRSEK
PNWDYHAEIQAFGHRLQENFSLDLLKTAFAVNSCYIKSEEAKRQQLGIEKEAVLLNLKSNQELSEQG
TSFSQTCLTQFLEDEYPDMPTEGIKNLVDFLTGEEVVCHVARNLAVEQLTSEEFVPPAVLQQT
FFAVIGALLQSSGPERTALFIRDFLITQMTGKELFEMWKIINPMGLLVEELKKRNVSAPESTRQS
GGTTALPLYFVGLYCDKKLIAEGPGETVLVAEEEEARVALRKLYGFTENRRPWNYSKPKETLRAE
KSITAS

Host

Mouse

Reactivity	Human
Interspecies Antigen Sequence	Mouse (85); Rat (87)
Quality Control Testing	Antibody reactive against mammalian transfected lysate.
Storage Buffer	In 1x PBS, pH 7.4
Storage Instruction	Store at -20°C or lower. Aliquot to avoid repeated freezing and thawing.

Applications

- Western Blot (Tissue lysate)

MRPL44 MaxPab polyclonal antibody. Western Blot analysis of MRPL44 expression in human kidney.

[Protocol Download](#)

- Western Blot (Transfected lysate)

Western Blot analysis of MRPL44 expression in transfected 293T cell line ([H00065080-T01](#)) by MRPL44 MaxPab polyclonal antibody.

Lane 1: MRPL44 transfected lysate(37.50 KDa).

Lane 2: Non-transfected lysate.

[Protocol Download](#)

Gene Info — MRPL44

Entrez GeneID	65080
GeneBank Accession#	NM_022915
Protein Accession#	NP_075066.1
Gene Name	MRPL44
Gene Alias	FLJ12701, FLJ13990, FLJ37688, L44MT, MRP-L44
Gene Description	mitochondrial ribosomal protein L44
Gene Ontology	Hyperlink

Gene Summary

Mammalian mitochondrial ribosomal proteins are encoded by nuclear genes and help in protein synthesis within the mitochondrion. Mitochondrial ribosomes (mitoribosomes) consist of a small 28S subunit and a large 39S subunit. They have an estimated 75% protein to rRNA composition compared to prokaryotic ribosomes, where this ratio is reversed. Another difference between mammalian mitoribosomes and prokaryotic ribosomes is that the latter contain a 5S rRNA. Among different species, the proteins comprising the mitoribosome differ greatly in sequence, and sometimes in biochemical properties, which prevents easy recognition by sequence homology. This gene encodes a 39S subunit protein. [provided by RefSeq]

Other Designations

39S ribosomal protein L44, mitochondrial