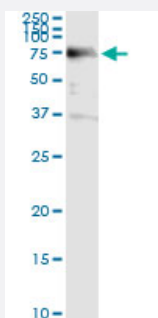


ACD (Human) IP-WB Antibody Pair

Catalog # H00065057-PW1

Size 1 Set

Applications



Immunoprecipitation of ACD transfected lysate using mouse monoclonal anti-ACD and Protein A Magnetic Bead ([U0007](#)), and immunoblotted with rabbit polyclonal anti-ACD.

Specification

| | |
|--------------------------------------|---|
| Product Description | This IP-WB antibody pair set comes with one antibody for immunoprecipitation and another to detect the precipitated protein in western blot. |
| Reactivity | Human |
| Interspecies Antigen Sequence | Mouse (59); Rat (61) |
| Quality Control Testing | Immunoprecipitation-Western Blot (IP-WB) Immunoprecipitation of ACD transfected lysate using mouse monoclonal anti-ACD and Protein A Magnetic Bead (U0007), and immunoblotted with rabbit polyclonal anti-ACD. |
| Supplied Product | Antibody pair set content: 1. Antibody pair for IP: mouse monoclonal anti-ACD (300 ug) 2. Antibody pair for WB: rabbit polyclonal anti-ACD (50 ul) |
| Storage Instruction | Store reagents of the antibody pair set at -20°C or lower. Please aliquot to avoid repeated freeze thaw cycle. Reagents should be returned to -20°C storage immediately after use. |

Applications

- Immunoprecipitation-Western Blot

[Protocol Download](#)

Gene Info — ACD

Entrez GeneID [65057](#)

Gene Name ACD

Gene Alias PIP1, PTOP, TINT1, TPP1

Gene Description adrenocortical dysplasia homolog (mouse)

Omim ID [609377](#)

Gene Ontology [Hyperlink](#)

Gene Summary This gene encodes a protein that is involved in telomere function. This protein is one of six core proteins in the telosome/shelterin telomeric complex, which functions to maintain telomere length and to protect telomere ends. Through its interaction with other components, this protein plays a key role in the assembly and stabilization of this complex, and it mediates the access of telomerase to the telomere. Multiple transcript variants encoding different isoforms have been found for this gene. This gene, which is also referred to as TPP1, is distinct from the unrelated TPP1 gene on chromosome 11, which encodes tripeptidyl-peptidase I. [provided by RefSeq]

Other Designations POT1 and TIN2 organizing protein|TIN2 interacting protein 1|adrenocortical dysplasia homolog

Disease

- [Adrenal Insufficiency](#)
- [Breast Neoplasms](#)
- [Esophageal Achalasia](#)
- [Genetic Predisposition to Disease](#)
- [Metabolism](#)
- [Neoplasm Metastasis](#)
- [Syndrome](#)