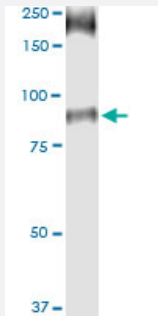


# SLC26A6 (Human) IP-WB Antibody Pair

Catalog # H00065010-PW1

Size 1 Set

## Applications



Immunoprecipitation of SLC26A6 transfected lysate using rabbit polyclonal anti-SLC26A6 and Protein A Magnetic Bead ([U0007](#)), and immunoblotted with mouse purified polyclonal anti-SLC26A6.

## Specification

<b>Product Description</b>	This IP-WB antibody pair set comes with one antibody for immunoprecipitation and another to detect the precipitated protein in western blot.
<b>Reactivity</b>	Human
<b>Quality Control Testing</b>	Immunoprecipitation-Western Blot (IP-WB) Immunoprecipitation of SLC26A6 transfected lysate using rabbit polyclonal anti-SLC26A6 and Protein A Magnetic Bead ( <a href="#">U0007</a> ), and immunoblotted with mouse purified polyclonal anti-SLC26A6.
<b>Supplied Product</b>	Antibody pair set content: 1. Antibody pair for IP: rabbit polyclonal anti-SLC26A6 (300 ul) 2. Antibody pair for WB: mouse purified polyclonal anti-SLC26A6 (50 ug)
<b>Storage Instruction</b>	Store reagents of the antibody pair set at -20°C or lower. Please aliquot to avoid repeated freeze thaw cycle. Reagents should be returned to -20°C storage immediately after use.

## Applications

- Immunoprecipitation-Western Blot

[Protocol Download](#)

## Gene Info — SLC26A6

**Entrez GeneID** [65010](#)**Gene Name** SLC26A6**Gene Alias** DKFZp586E1422**Gene Description** solute carrier family 26, member 6**Omim ID** [610068](#)**Gene Ontology** [Hyperlink](#)

**Gene Summary** This gene belongs to the solute carrier 26 family, whose members encode anion transporter proteins. This particular family member encodes a protein involved in transporting chloride, oxalate, sulfate and bicarbonate. Several alternatively spliced transcript variants of this gene, encoding distinct isoforms, have been described, but the full-length nature of some of these variants has not been determined. [provided by RefSeq]

**Other Designations** anion transporter 1|pendrin L1|pendrin-like protein 1|sulfate anion transporter

## Disease

- [Genetic Predisposition to Disease](#)
- [Hypercalciuria](#)
- [Hyperparathyroidism](#)
- [Kidney Calculi](#)
- [Nephrolithiasis](#)
- [Schizophrenia](#)