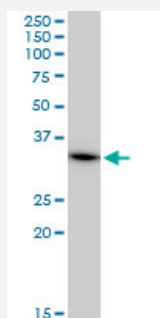


# MRPL1 monoclonal antibody (M02), clone 2C4

Catalog # H00065008-M02

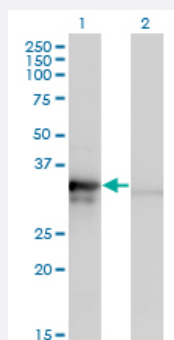
Size 100 ug

## Applications



### Western Blot (Cell lysate)

MRPL1 monoclonal antibody (M02), clone 2C4. Western Blot analysis of MRPL1 expression in A-431(Cat # L015V1 ).

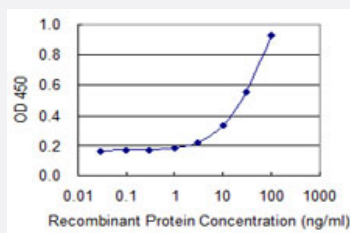


### Western Blot (Transfected lysate)

Western Blot analysis of MRPL1 expression in transfected 293T cell line by MRPL1 monoclonal antibody (M02), clone 2C4.

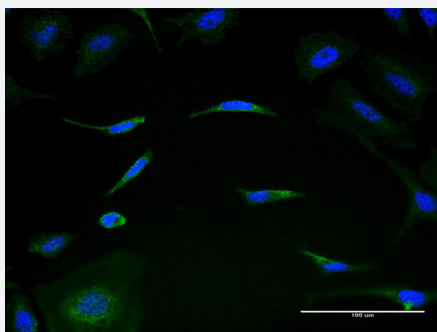
Lane 1: MRPL1 transfected lysate(34.5 KDa).

Lane 2: Non-transfected lysate.



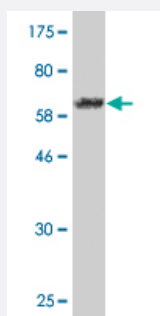
### Sandwich ELISA (Recombinant protein)

Detection limit for recombinant GST tagged MRPL1 is 1 ng/ml as a capture antibody.



## Immunofluorescence

Immunofluorescence of monoclonal antibody to MRPL1 on HeLa cell .  
[antibody concentration 10 ug/ml]



Western Blot detection against Immunogen (59.07 KDa) .

## Specification

<b>Product Description</b>	Mouse monoclonal antibody raised against a full-length recombinant MRPL1.
<b>Immunogen</b>	MRPL1 (AAH15109, 1 a.a. ~ 303 a.a) full-length recombinant protein with GST tag. MW of the GST tag alone is 26 KDa.
<b>Sequence</b>	MVYQTS LCSCSVNIRVPNRHFAAAKKS AKKTKKGAK EKPDEKKDEIEKIKAYPYMEGEPEDDVY LKRLYPRQIYEVEKAVHLLKKFQILDFTSPKQSVYLDLTLDMALGKKKNVEPFTSVLSLPYPFASEI NKVAVFTENASEVKIAEENGAASAGGTS LIQKWDDENADFVAVPEIMPELNRLRKKLNKKYPKL SRNSIGRDIPKMLELFKNGHEIKVDEERENFLQTKIATLDMSSDQIAANLQAVINEVCRHRPLNLGP FVVRAFLRSSTSEGLLLKIDPLLPKEVKNEESEKEDA
<b>Host</b>	Mouse
<b>Reactivity</b>	Human
<b>Interspecies Antigen Sequence</b>	Mouse (78); Rat (78)
<b>Isotype</b>	IgG1 Kappa
<b>Quality Control Testing</b>	Antibody Reactive Against Recombinant Protein. Western Blot detection against Immunogen (59.07 KDa) .
<b>Storage Buffer</b>	In 1x PBS, pH 7.4
<b>Storage Instruction</b>	Store at -20°C or lower. Aliquot to avoid repeated freezing and thawing.

## Applications

- Western Blot (Cell lysate)

MRPL1 monoclonal antibody (M02), clone 2C4. Western Blot analysis of MRPL1 expression in A-431(Cat # L015V1 ).

[Protocol Download](#)

- Western Blot (Transfected lysate)

Western Blot analysis of MRPL1 expression in transfected 293T cell line by MRPL1 monoclonal antibody (M02), clone 2C4.

Lane 1: MRPL1 transfected lysate(34.5 KDa).

Lane 2: Non-transfected lysate.

[Protocol Download](#)

- Western Blot (Recombinant protein)

[Protocol Download](#)

- Sandwich ELISA (Recombinant protein)

Detection limit for recombinant GST tagged MRPL1 is 1 ng/ml as a capture antibody.

[Protocol Download](#)

- ELISA

- Immunofluorescence

Immunofluorescence of monoclonal antibody to MRPL1 on HeLa cell . [antibody concentration 10 ug/ml]

## Gene Info — MRPL1

Entrez GeneID [65008](#)

GeneBank Accession# [BC015109](#)

Protein Accession# [AAH15109](#)

Gene Name MRPL1

Gene Alias BM022, FLJ96680, L1MT, MRP-L1

Gene Description mitochondrial ribosomal protein L1

## Gene Ontology

[Hyperlink](#)

## Gene Summary

Mammalian mitochondrial ribosomal proteins are encoded by nuclear genes and help in protein synthesis within the mitochondrion. Mitochondrial ribosomes (mitoribosomes) consist of a small 28S subunit and a large 39S subunit. They have an estimated 75% protein to rRNA composition compared to prokaryotic ribosomes, where this ratio is reversed. Another difference between mammalian mitoribosomes and prokaryotic ribosomes is that the latter contain a 5S rRNA. Among different species, the proteins comprising the mitoribosome differ greatly in sequence, and sometimes in biochemical properties, which prevents easy recognition by sequence homology. This gene encodes a 39S subunit protein that belongs to the L1 ribosomal protein family. [provided by RefSeq]

## Other Designations

39S ribosomal protein L1, mitochondrial|OTTHUMP00000160703

## Disease

- [Tobacco Use Disorder](#)