

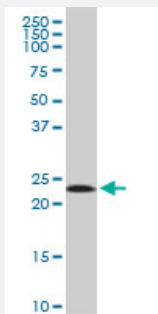
MaxPab®

# MRPL11 purified MaxPab mouse polyclonal antibody (B01P)

Catalog # H00065003-B01P

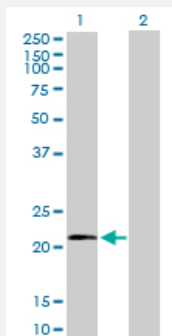
Size 50 ug

## Applications



### Western Blot (Cell lysate)

MRPL11 MaxPab polyclonal antibody. Western Blot analysis of MRPL11 expression in A-431.



### Western Blot (Transfected lysate)

Western Blot analysis of MRPL11 expression in transfected 293T cell line ([H00065003-T01](#)) by MRPL11 MaxPab polyclonal antibody.

Lane 1: MRPL11 transfected lysate(21.12 KDa).

Lane 2: Non-transfected lysate.

## Specification

Product Description	Mouse polyclonal antibody raised against a full-length human MRPL11 protein.
Immunogen	MRPL11 (NP_057134.1, 1 a.a. ~ 192 a.a) full-length human protein.
Sequence	MSKLGRAARGLRKPEVGGVIRAMRAGLAMPGPPLGPVLGQRGVSINQFCKEFNERTKDIKEGIPL PTKILVKPDRTFEIKIGQPTVSYFLKAAAGIEKGARQTGKEVAGLVTLKHVYEIARIKAQDEAFALQD VPLSSVVRSSIIGSARSLGIRVVKDLSSEELAAFQKERAIFLAAQKEADLAAQEEAAKK
Host	Mouse
Reactivity	Human

Interspecies Antigen Sequence	Mouse (87); Rat (87)
Quality Control Testing	Antibody reactive against mammalian transfected lysate.
Storage Buffer	In 1x PBS, pH 7.4
Storage Instruction	Store at -20°C or lower. Aliquot to avoid repeated freezing and thawing.

## Applications

- Western Blot (Cell lysate)

MRPL11 MaxPab polyclonal antibody. Western Blot analysis of MRPL11 expression in A-431.

[Protocol Download](#)

- Western Blot (Transfected lysate)

Western Blot analysis of MRPL11 expression in transfected 293T cell line ([H00065003-T01](#)) by MRPL11 MaxPab polyclonal antibody.

Lane 1: MRPL11 transfected lysate(21.12 KDa).

Lane 2: Non-transfected lysate.

[Protocol Download](#)

## Gene Info — MRPL11

Entrez GeneID	<a href="#">65003</a>
GeneBank Accession#	<a href="#">NM_016050.2</a>
Protein Accession#	<a href="#">NP_057134.1</a>
Gene Name	MRPL11
Gene Alias	CGI-113, L11MT, MGC111024, MRP-L11
Gene Description	mitochondrial ribosomal protein L11
Gene Ontology	<a href="#">Hyperlink</a>

**Gene Summary**

Mammalian mitochondrial ribosomal proteins are encoded by nuclear genes and help in protein synthesis within the mitochondrion. Mitochondrial ribosomes (mitoribosomes) consist of a small 28S subunit and a large 39S subunit. They have an estimated 75% protein to rRNA composition compared to prokaryotic ribosomes, where this ratio is reversed. Another difference between mammalian mitoribosomes and prokaryotic ribosomes is that the latter contain a 5S rRNA. Among different species, the proteins comprising the mitoribosome differ greatly in sequence, and sometimes in biochemical properties, which prevents easy recognition by sequence homology. This gene encodes a 39S subunit protein. Sequence analysis identified three transcript variants that encode different isoforms. Pseudogenes corresponding to this gene are found on chromosomes 5q and 12q. [provided by RefSeq]

**Other Designations**

39S ribosomal protein L11, mitochondrial