

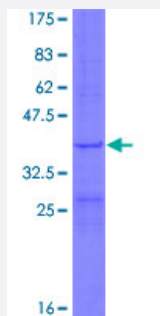
Full-Length

## MRPL34 (Human) Recombinant Protein (P01)

Catalog # H00064981-P01

Size 25 ug, 10 ug

### Applications



### Specification

Product Description	Human MRPL34 full-length ORF ( NP_076426.1, 1 a.a. - 92 a.a.) recombinant protein with GST-tag at N-terminal.
Sequence	MAVLGSLLGPTSRSAALLGGRWLQPRAWLGFPDAWGLPTPQQARGKARGNEYQPSNIKRKNK HGWVRRLSTPAGVQVILRRMLKGRKSLSH
Host	Wheat Germ (in vitro)
Theoretical MW (kDa)	36.6
Interspecies Antigen Sequence	Mouse (75); Rat (73)
Preparation Method	<a href="#">in vitro wheat germ expression system</a>
Purification	Glutathione Sepharose 4 Fast Flow
Quality Control Testing	12.5% SDS-PAGE Stained with Coomassie Blue.
Storage Buffer	50 mM Tris-HCl, 10 mM reduced Glutathione, pH=8.0 in the elution buffer.
Storage Instruction	Store at -80°C. Aliquot to avoid repeated freezing and thawing.
Note	Best use within three months from the date of receipt of this protein.

## Applications

- Enzyme-linked Immunoabsorbent Assay
- Western Blot (Recombinant protein)
- Antibody Production
- Protein Array

## Gene Info — MRPL34

**Entrez GeneID** [64981](#)

**GeneBank Accession#** [NM\\_023937.2](#)

**Protein Accession#** [NP\\_076426.1](#)

**Gene Name** MRPL34

**Gene Alias** L34mt, MGC24974, MGC2633

**Gene Description** mitochondrial ribosomal protein L34

**Gene Ontology** [Hyperlink](#)

**Gene Summary** Mammalian mitochondrial ribosomal proteins are encoded by nuclear genes and help in protein synthesis within the mitochondrion. Mitochondrial ribosomes (mitoribosomes) consist of a small 28S subunit and a large 39S subunit. They have an estimated 75% protein to rRNA composition compared to prokaryotic ribosomes, where this ratio is reversed. Another difference between mammalian mitoribosomes and prokaryotic ribosomes is that the latter contain a 5S rRNA. Among different species, the proteins comprising the mitoribosome differ greatly in sequence, and sometimes in biochemical properties, which prevents easy recognition by sequence homology. This gene encodes a 39S subunit protein. [provided by RefSeq]

**Other Designations** -