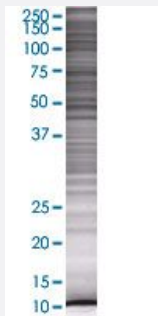


MRPS6 293T Cell Transient Overexpression Lysate(Denatured)

Catalog # H00064968-T01

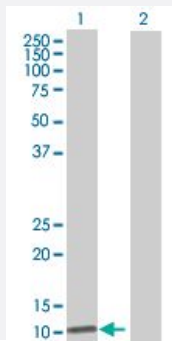
Size 100 uL

Applications



SDS-PAGE Gel

MRPS6 transfected lysate.



Western Blot

Lane 1: MRPS6 transfected lysate (13.86 KDa)

Lane 2: Non-transfected lysate.

Specification

Transfected Cell Line	293T
Plasmid	pCMV-MRPS6 full-length
Host	Human
Theoretical MW (kDa)	13.86
Interspecies Antigen Sequence	Mouse (85)

Quality Control Testing

Transient overexpression cell lysate was tested with Anti-MRPS6 antibody ([H00064968-B01](#)) by Western Blots.
 SDS-PAGE Gel
 MRPS6 transfected lysate.
 Western Blot
 Lane 1: MRPS6 transfected lysate (13.86 KDa)
 Lane 2: Non-transfected lysate.

Storage Buffer

1X Sample Buffer (50 mM Tris-HCl, 2% SDS, 10% glycerol, 300 mM 2-mercaptoethanol, 0.01% Bromophenol blue)

Storage Instruction

Store at -80°C. Aliquot to avoid repeated freezing and thawing.

Applications

- Western Blot

Gene Info — MRPS6

Entrez GeneID

[64968](#)

GeneBank Accession#

[NM_032476.2](#)

Protein Accession#

[NP_115865.1](#)

Gene Name

MRPS6

Gene Alias

C21orf101, MRP-S6, RPMS6, S6mt

Gene Description

mitochondrial ribosomal protein S6

Gene Ontology

[Hyperlink](#)

Gene Summary

Mammalian mitochondrial ribosomal proteins are encoded by nuclear genes and help in protein synthesis within the mitochondrion. Mitochondrial ribosomes (mitoribosomes) consist of a small 28 S subunit and a large 39S subunit. They have an estimated 75% protein to rRNA composition compared to prokaryotic ribosomes, where this ratio is reversed. Another difference between mammalian mitoribosomes and prokaryotic ribosomes is that the latter contain a 5S rRNA. Among different species, the proteins comprising the mitoribosome differ greatly in sequence, and sometimes in biochemical properties, which prevents easy recognition by sequence homology. This gene encodes a 28S subunit protein that belongs to the ribosomal protein S6P family. Pseudogenes corresponding to this gene are found on chromosomes 1p and 12q. [provided by RefSeq]

Other Designations

OTTHUMP00000068540

Disease

- [Celiac Disease](#)
- [Coronary Artery Disease](#)
- [Coronary Disease](#)
- [Genetic Predisposition to Disease](#)
- [Myocardial Infarction](#)