

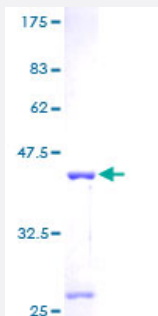
Full-Length

MRPS6 (Human) Recombinant Protein (P01)

Catalog # H00064968-P01

Size 25 ug, 10 ug

Applications



Specification

Product Description	Human MRPS6 full-length ORF (AAH10076, 1 a.a. - 125 a.a.) recombinant protein with GST-tag at N-terminal.
Sequence	MPRYELALILKAMQRPETAATLKRTIEALMDRGAMRDLENLGERALPYRISAHSQQHNRGGYFLVD FYAPTAAVESMVEHLSRDIDVIRGNIVKHPLTQELKECEGIVPVPLAEKLYSTKKRKK
Host	Wheat Germ (in vitro)
Theoretical MW (kDa)	39.49
Interspecies Antigen Sequence	Mouse (85)
Preparation Method	in vitro wheat germ expression system
Purification	Glutathione Sepharose 4 Fast Flow
Quality Control Testing	12.5% SDS-PAGE Stained with Coomassie Blue.
Storage Buffer	50 mM Tris-HCl, 10 mM reduced Glutathione, pH=8.0 in the elution buffer.
Storage Instruction	Store at -80°C. Aliquot to avoid repeated freezing and thawing.
Note	Best use within three months from the date of receipt of this protein.

Applications

- Enzyme-linked Immunoabsorbent Assay
- Western Blot (Recombinant protein)
- Antibody Production
- Protein Array

Gene Info — MRPS6

Entrez GeneID [64968](#)

GeneBank Accession# [BC010076](#)

Protein Accession# [AAH10076](#)

Gene Name MRPS6

Gene Alias C21orf101, MRP-S6, RPMS6, S6mt

Gene Description mitochondrial ribosomal protein S6

Gene Ontology [Hyperlink](#)

Gene Summary Mammalian mitochondrial ribosomal proteins are encoded by nuclear genes and help in protein synthesis within the mitochondrion. Mitochondrial ribosomes (mitoribosomes) consist of a small 28 S subunit and a large 39S subunit. They have an estimated 75% protein to rRNA composition compared to prokaryotic ribosomes, where this ratio is reversed. Another difference between mammalian mitoribosomes and prokaryotic ribosomes is that the latter contain a 5S rRNA. Among different species, the proteins comprising the mitoribosome differ greatly in sequence, and sometimes in biochemical properties, which prevents easy recognition by sequence homology. This gene encodes a 28S subunit protein that belongs to the ribosomal protein S6P family. Pseudogenes corresponding to this gene are found on chromosomes 1p and 12q. [provided by RefSeq]

Other Designations OTTHUMP00000068540

Disease

- [Celiac Disease](#)
- [Coronary Artery Disease](#)

- [Coronary Disease](#)
- [Genetic Predisposition to Disease](#)
- [Myocardial Infarction](#)