

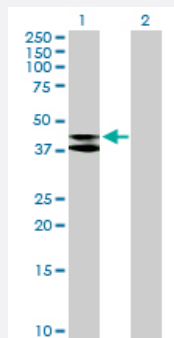
MaxPab®

## MRPS9 purified MaxPab mouse polyclonal antibody (B02P)

Catalog # H00064965-B02P

Size 50 ug

### Applications



#### Western Blot (Transfected lysate)

Western Blot analysis of MRPS9 expression in transfected 293T cell line ([H00064965-T02](#)) by MRPS9 MaxPab polyclonal antibody.

Lane 1: MRPS9 transfected lysate(43.56 KDa).

Lane 2: Non-transfected lysate.

### Specification

Product Description	Mouse polyclonal antibody raised against a full-length human MRPS9 protein.
Immunogen	MRPS9 (NP_872578.1, 1 a.a. ~ 396 a.a) full-length human protein.
Sequence	MAAPCVSYGGAVSYRLLWGRGSLARKQGLWKTAAPELQTNVRSQILRLRHTAFVIPKKNVPTSK RETYTEDFIKKQIEEFNIGKRHLANMMGEDPETFTQEDIDRAIYLFPSGLFEKRARPVMKHPEQIFP RQRAIQWGEDGRPFHYLFYTGKQSYSLMHDVYGMLLNLEKHQSHLQAKSLLPEKTVTRDVIGSR WLIKEELEEMLVEKLSLDLYMQFIRLLEKLLTSQCGAAEEEFVQRFRRSVTLESKKQLIEPVQYDE QGMAFSKSEGKRKTAKAEAVYKHGSGRIKVNIDYQLYFPITQDREQLMFPFHFVDRLGKHDVTC TVSGGGRSAQAGAIRLAMAKALCSFVTEDEVEMRQAGLLTTDPRVRERKKPGQEGARRKFTW KKR
Host	Mouse
Reactivity	Human
Interspecies Antigen Sequence	Mouse (77); Rat (78)
Quality Control Testing	Antibody reactive against mammalian transfected lysate.
Storage Buffer	In 1x PBS, pH 7.4

## Storage Instruction

Store at -20°C or lower. Aliquot to avoid repeated freezing and thawing.

## Applications

- Western Blot (Transfected lysate)

Western Blot analysis of MRPS9 expression in transfected 293T cell line ([H00064965-T02](#)) by MRPS9 MaxPab polyclonal antibody.

Lane 1: MRPS9 transfected lysate(43.56 KDa).

Lane 2: Non-transfected lysate.

[Protocol Download](#)

## Gene Info — MRPS9

Entrez GeneID [64965](#)

GeneBank Accession# [NM\\_182640.1](#)

Protein Accession# [NP\\_872578.1](#)

Gene Name MRPS9

Gene Alias MRP-S9, RPMS9, S9mt

Gene Description mitochondrial ribosomal protein S9

Gene Ontology [Hyperlink](#)

**Gene Summary** Mammalian mitochondrial ribosomal proteins are encoded by nuclear genes and help in protein synthesis within the mitochondrion. Mitochondrial ribosomes (mitoribosomes) consist of a small 28S subunit and a large 39S subunit. They have an estimated 75% protein to rRNA composition compared to prokaryotic ribosomes, where this ratio is reversed. Another difference between mammalian mitoribosomes and prokaryotic ribosomes is that the latter contain a 5S rRNA. Among different species, the proteins comprising the mitoribosome differ greatly in sequence, and sometimes in biochemical properties, which prevents easy recognition by sequence homology. This gene encodes a 28S subunit protein. [provided by RefSeq]

**Other Designations** 28S ribosomal protein S9, mitochondrial