

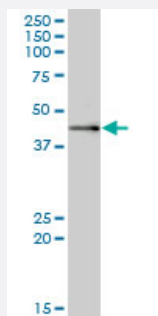
MaxPab®

MRPS9 purified MaxPab mouse polyclonal antibody (B01P)

Catalog # H00064965-B01P

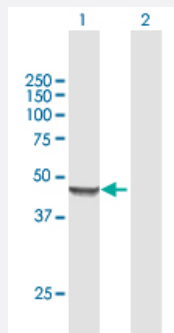
Size 50 ug

Applications



Western Blot (Tissue lysate)

MRPS9 MaxPab polyclonal antibody. Western Blot analysis of MRPS9 expression in human pancreas.



Western Blot (Transfected lysate)

Western Blot analysis of MRPS9 expression in transfected 293T cell line ([H00064965-T01](#)) by MRPS9 MaxPab polyclonal antibody.

Lane 1: MRPS9 transfected lysate(43.67 KDa).

Lane 2: Non-transfected lysate.

Specification

Product Description

Mouse polyclonal antibody raised against a full-length human MRPS9 protein.

Immunogen

MRPS9 (AAH57240.1, 1 a.a. ~ 396 a.a) full-length human protein.

Sequence

MAAPCVSYGGAVSYRLLLWGRGSLARKQGLWKTAAPELQTNVRSQILRLRHTAFVIPKKNVPTSK
RETYTEFDIKKQIEEFNIGKRHLANMMGEDPETFTQEDIDRAIAYLFPSGLFEKRARPVMKHPEQIFP
RQRAIQWGEDGRPFHYLFYTGKQSYSLMHDVYGMLLNLEKHQSHLQAKSLLPEKTVTRDVIGSR
WLIKEELEEMLVEKLSLDYMQFIRLLEKLLTSQCGAAEEEFVQRFRRSVTLESKKQLIEPVQYDE
QGMAFSKSEGKRKTAKAEAMYKHGSGRIKVNIGIDYQLYFPITQDREQLMFPFHFVDRLGKHDVTC
TVSGGGRSAQAGAIRLAMAKALCSFVTEDEVEMRQAGLLTTPRVRRERKKPGQEGARRKFTW
KKR

Host	Mouse
Reactivity	Human
Interspecies Antigen Sequence	Mouse (77); Rat (78)
Quality Control Testing	Antibody reactive against mammalian transfected lysate.
Storage Buffer	In 1x PBS, pH 7.4
Storage Instruction	Store at -20°C or lower. Aliquot to avoid repeated freezing and thawing.

Applications

- Western Blot (Tissue lysate)

MRPS9 MaxPab polyclonal antibody. Western Blot analysis of MRPS9 expression in human pancreas.

[Protocol Download](#)

- Western Blot (Transfected lysate)

Western Blot analysis of MRPS9 expression in transfected 293T cell line ([H00064965-T01](#)) by MRPS9 MaxPab polyclonal antibody.

Lane 1: MRPS9 transfected lysate(43.67 KDa).

Lane 2: Non-transfected lysate.

[Protocol Download](#)

Gene Info — MRPS9

Entrez GeneID	64965
GeneBank Accession#	BC057240.1
Protein Accession#	AAH57240.1
Gene Name	MRPS9
Gene Alias	MRP-S9, RPMS9, S9mt
Gene Description	mitochondrial ribosomal protein S9
Gene Ontology	Hyperlink

Gene Summary

Mammalian mitochondrial ribosomal proteins are encoded by nuclear genes and help in protein synthesis within the mitochondrion. Mitochondrial ribosomes (mitoribosomes) consist of a small 28S subunit and a large 39S subunit. They have an estimated 75% protein to rRNA composition compared to prokaryotic ribosomes, where this ratio is reversed. Another difference between mammalian mitoribosomes and prokaryotic ribosomes is that the latter contain a 5S rRNA. Among different species, the proteins comprising the mitoribosome differ greatly in sequence, and sometimes in biochemical properties, which prevents easy recognition by sequence homology. This gene encodes a 28S subunit protein. [provided by RefSeq]

Other Designations

28S ribosomal protein S9, mitochondrial