

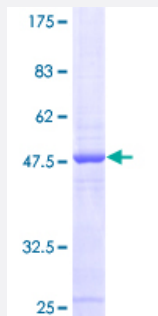
Full-Length

MRPS24 (Human) Recombinant Protein (P01)

Catalog # H00064951-P01

Size 25 ug, 10 ug

Applications



Specification

Product Description	Human MRPS24 full-length ORF (NP_114403.1, 1 a.a. - 167 a.a.) recombinant protein with GST-tag at N-terminal.
Sequence	MAASVCSGLLGPRVLSWSRELPCAWRALHTSPVCAKNRAARVRVSKGDKPVTYEEAHAPHYIA HRKGWLSLHTGNLDGEDHAAERTVEDVFLRKFMWGTFPGCLADQLVLKRRGNQLEICAVVLRQL SPHKYYFLVGYSETLLSYFYKCPVRLHLQTVPSKVVYKYL
Host	Wheat Germ (in vitro)
Theoretical MW (kDa)	45.4
Interspecies Antigen Sequence	Mouse (83); Rat (84)
Preparation Method	in vitro wheat germ expression system
Purification	Glutathione Sepharose 4 Fast Flow
Quality Control Testing	12.5% SDS-PAGE Stained with Coomassie Blue.
Storage Buffer	50 mM Tris-HCl, 10 mM reduced Glutathione, pH=8.0 in the elution buffer.
Storage Instruction	Store at -80°C. Aliquot to avoid repeated freezing and thawing.

Note

Best use within three months from the date of receipt of this protein.

Applications

- Enzyme-linked Immunoabsorbent Assay
- Western Blot (Recombinant protein)
- Antibody Production
- Protein Array

Gene Info — MRPS24

Entrez GeneID [64951](#)

GeneBank Accession# [NM_032014.1](#)

Protein Accession# [NP_114403.1](#)

Gene Name MRPS24

Gene Alias HSPC335, MRP-S24

Gene Description mitochondrial ribosomal protein S24

Gene Ontology [Hyperlink](#)

Gene Summary Mammalian mitochondrial ribosomal proteins are encoded by nuclear genes and help in protein synthesis within the mitochondrion. Mitochondrial ribosomes (mitoribosomes) consist of a small 28S subunit and a large 39S subunit. They have an estimated 75% protein to rRNA composition compared to prokaryotic ribosomes, where this ratio is reversed. Another difference between mammalian mitoribosomes and prokaryotic ribosomes is that the latter contain a 5S rRNA. Among different species, the proteins comprising the mitoribosome differ greatly in sequence, and sometimes in biochemical properties, which prevents easy recognition by sequence homology. This gene encodes a 28S subunit protein. A pseudogene corresponding to this gene is found on chromosome 11. [provided by RefSeq]

Other Designations mitochondrial 28S ribosomal protein S24