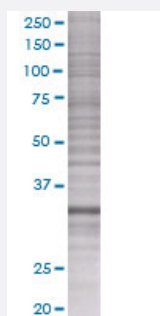


# CENPH 293T Cell Transient Overexpression Lysate(Denatured)

Catalog # H00064946-T02

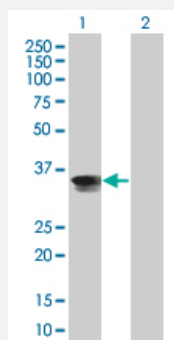
Size 100 uL

## Applications



### SDS-PAGE Gel

CENPH transfected lysate.



### Western Blot

Lane 1: CENPH transfected lysate ( 28.5 KDa)

Lane 2: Non-transfected lysate.

## Specification

**Transfected Cell Line** 293T

**Plasmid** pCMV-CENPH full-length

**Host** Human

**Theoretical MW (kDa)** 27.28

**Interspecies Antigen Sequence** Mouse (65)

**Quality Control Testing**

Transient overexpression cell lysate was tested with Anti-CENPH antibody ([H00064946-B02](#)) by Western Blots.  
SDS-PAGE Gel  
CENPH transfected lysate.  
Western Blot  
Lane 1: CENPH transfected lysate ( 28.5 KDa)  
Lane 2: Non-transfected lysate.

**Storage Buffer**

1X Sample Buffer (50 mM Tris-HCl, 2% SDS, 10% glycerol, 300 mM 2-mercaptoethanol, 0.01% Bromophenol blue)

**Storage Instruction**

Store at -80°C. Aliquot to avoid repeated freezing and thawing.

## Applications

- Western Blot

## Gene Info — CENPH

**Entrez GeneID**[64946](#)**GeneBank Accession#**[NM\\_022909](#)**Protein Accession#**[NP\\_075060](#)**Gene Name**

CENPH

**Gene Alias**

NNF1, PMF1

**Gene Description**

centromere protein H

**Omim ID**[605607](#)**Gene Ontology**[Hyperlink](#)**Gene Summary**

Centromere and kinetochore proteins play a critical role in centromere structure, kinetochore formation, and sister chromatid separation. The protein encoded by this gene colocalizes with inner kinetochore plate proteins CENP-A and CENP-C in both interphase and metaphase. It localizes outside of centromeric heterochromatin, where CENP-B is localized, and inside the kinetochore corona, where CENP-E is localized during prometaphase. It is thought that this protein can bind to itself, as well as to CENP-A, CENP-B or CENP-C. Multimers of the protein localize constitutively to the inner kinetochore plate and play an important role in the organization and function of the active centromere-kinetochore complex. [provided by RefSeq]

**Other Designations**

NNF1, MIND kinetochore complex component, homolog|kinetochore protein CENP-H