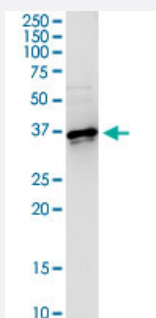


CENPH (Human) IP-WB Antibody Pair

Catalog # H00064946-PW2

Size 1 Set

Applications



Immunoprecipitation of CENPH transfected lysate using rabbit polyclonal anti-CENPH and Protein A Magnetic Bead ([U0007](#)), and immunoblotted with mouse purified polyclonal anti-CENPH.

Specification

Product Description	This IP-WB antibody pair set comes with one antibody for immunoprecipitation and another to detect the precipitated protein in western blot.
Reactivity	Human
Interspecies Antigen Sequence	Mouse (65)
Quality Control Testing	Immunoprecipitation-Western Blot (IP-WB) Immunoprecipitation of CENPH transfected lysate using rabbit polyclonal anti-CENPH and Protein A Magnetic Bead (U0007), and immunoblotted with mouse purified polyclonal anti-CENPH.
Supplied Product	Antibody pair set content: 1. Antibody pair for IP: rabbit polyclonal anti-CENPH (300 ul) 2. Antibody pair for WB: mouse purified polyclonal anti-CENPH (50 ug)
Storage Instruction	Store reagents of the antibody pair set at -20°C or lower. Please aliquot to avoid repeated freeze thaw cycle. Reagents should be returned to -20°C storage immediately after use.

Applications

- Immunoprecipitation-Western Blot

[Protocol Download](#)

Gene Info — CENPH

Entrez GeneID [64946](#)

Gene Name CENPH

Gene Alias NNF1, PMF1

Gene Description centromere protein H

Omim ID [605607](#)

Gene Ontology [Hyperlink](#)

Gene Summary Centromere and kinetochore proteins play a critical role in centromere structure, kinetochore formation, and sister chromatid separation. The protein encoded by this gene colocalizes with inner kinetochore plate proteins CENP-A and CENP-C in both interphase and metaphase. It localizes outside of centromeric heterochromatin, where CENP-B is localized, and inside the kinetochore corona, where CENP-E is localized during prometaphase. It is thought that this protein can bind to itself, as well as to CENP-A, CENP-B or CENP-C. Multimers of the protein localize constitutively to the inner kinetochore plate and play an important role in the organization and function of the active centromere-kinetochore complex. [provided by RefSeq]

Other Designations NNF1, MIND kinetochore complex component, homolog|kinetochore protein CENP-H