

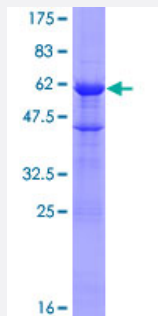
## Full-Length

# CENPH (Human) Recombinant Protein (P02)

Catalog # H00064946-P02

Size 25 ug, 10 ug

## Applications



## Specification

### Product Description

Human CENPH full-length ORF ( NP\_075060.1, 1 a.a. - 247 a.a.) recombinant protein with GST-tag at N-terminal.

### Sequence

MEEQPQMQDADEPADSGGEGRAGGPPQVAGAAACSEDRMTLLLRLRAQTKQQLLEYKSMVD  
ASEEKTPEQIMQEKGIEAKIEDLENEIEEVKVAFEIKKLALDRMRLSTALKKNLEKISRQSSVLMDN  
MKHLLLELNKLIMKSQQESWDLEEKLLDIRKKRLQLKQASESKLLEIQTEKNKQKIDLDSEMSERIK  
IIRQNLQMEIKITTVIQHVFNLIILGSKVNWAE DPALKEVLQLEKNVDM

### Host

Wheat Germ (in vitro)

### Theoretical MW (kDa)

54.9

### Interspecies Antigen Sequence

Mouse (65)

### Preparation Method

[in vitro wheat germ expression system](#)

### Purification

Glutathione Sepharose 4 Fast Flow

### Quality Control Testing

12.5% SDS-PAGE Stained with Coomassie Blue.

### Storage Buffer

50 mM Tris-HCl, 10 mM reduced Glutathione, pH=8.0 in the elution buffer.

### Storage Instruction

Store at -80°C. Aliquot to avoid repeated freezing and thawing.

**Note**

Best use within three months from the date of receipt of this protein.

## Applications

- Enzyme-linked Immunoabsorbent Assay
- Western Blot (Recombinant protein)
- Antibody Production
- Protein Array

## Gene Info — CENPH

**Entrez GeneID** [64946](#)**GeneBank Accession#** [NM\\_022909.3](#)**Protein Accession#** [NP\\_075060.1](#)**Gene Name** CENPH**Gene Alias** NNF1, PMF1**Gene Description** centromere protein H**Omim ID** [605607](#)**Gene Ontology** [Hyperlink](#)

**Gene Summary** Centromere and kinetochore proteins play a critical role in centromere structure, kinetochore formation, and sister chromatid separation. The protein encoded by this gene colocalizes with inner kinetochore plate proteins CENP-A and CENP-C in both interphase and metaphase. It localizes outside of centromeric heterochromatin, where CENP-B is localized, and inside the kinetochore corona, where CENP-E is localized during prometaphase. It is thought that this protein can bind to itself, as well as to CENP-A, CENP-B or CENP-C. Multimers of the protein localize constitutively to the inner kinetochore plate and play an important role in the organization and function of the active centromere-kinetochore complex. [provided by RefSeq]

**Other Designations** NNF1, MIND kinetochore complex component, homolog|kinetochore protein CENP-H