

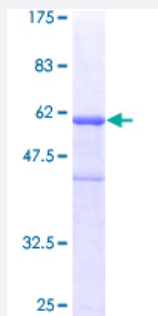
Full-Length

CENPH (Human) Recombinant Protein (P01)

Catalog # H00064946-P01

Size 25 ug, 10 ug

Applications



Specification

Product Description	Human CENPH full-length ORF (AAH12024, 1 a.a. - 247 a.a.) recombinant protein with GST-tag at N-terminal.
Sequence	MEEQPQMQDADEPADSGGEGRAGGPPQVAGAAACSEDRMTLLLRLRAQTKQQLLEYKSMVD ASEEKTPEQIMQEKGIEAKIEDLENEIEEVKVAFEIKKLALDRMRLSTALKKNLEKISRQSSVLMDN MKHLLLELNKLIMKSQQESWDLEEKLLDIRKKRLQLKQASESKLLEIQTEKNKQKIDLSMENSERIK IIRQNLQMEIKITTVIQHVFNLIILGSKVNWAE DPALKEI MLQLEKNV DMM
Host	Wheat Germ (in vitro)
Theoretical MW (kDa)	52.91
Interspecies Antigen Sequence	Mouse (65)
Preparation Method	in vitro wheat germ expression system
Purification	Glutathione Sepharose 4 Fast Flow
Quality Control Testing	12.5% SDS-PAGE Stained with Coomassie Blue.
Storage Buffer	50 mM Tris-HCl, 10 mM reduced Glutathione, pH=8.0 in the elution buffer.
Storage Instruction	Store at -80°C. Aliquot to avoid repeated freezing and thawing.

Note

Best use within three months from the date of receipt of this protein.

Applications

- Enzyme-linked Immunoabsorbent Assay
- Western Blot (Recombinant protein)
- Antibody Production
- Protein Array

Gene Info — CENPH

Entrez GeneID [64946](#)

GeneBank Accession# [BC012024](#)

Protein Accession# [AAH12024](#)

Gene Name CENPH

Gene Alias NNF1, PMF1

Gene Description centromere protein H

Omim ID [605607](#)

Gene Ontology [Hyperlink](#)

Gene Summary Centromere and kinetochore proteins play a critical role in centromere structure, kinetochore formation, and sister chromatid separation. The protein encoded by this gene colocalizes with inner kinetochore plate proteins CENP-A and CENP-C in both interphase and metaphase. It localizes outside of centromeric heterochromatin, where CENP-B is localized, and inside the kinetochore corona, where CENP-E is localized during prometaphase. It is thought that this protein can bind to itself, as well as to CENP-A, CENP-B or CENP-C. Multimers of the protein localize constitutively to the inner kinetochore plate and play an important role in the organization and function of the active centromere-kinetochore complex. [provided by RefSeq]

Other Designations NNF1, MIND kinetochore complex component, homolog|kinetochore protein CENP-H