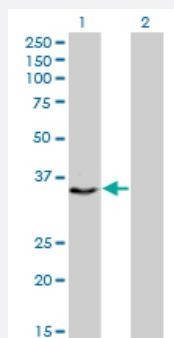


# CENPH monoclonal antibody (M01), clone 1F7

Catalog # H00064946-M01

Size 100 ug

## Applications

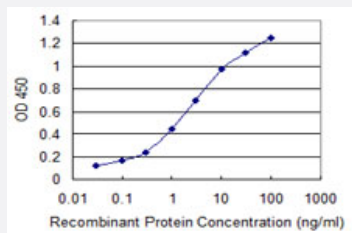


### Western Blot (Transfected lysate)

Western Blot analysis of CENPH expression in transfected 293T cell line by CENPH monoclonal antibody (M01), clone 1F7.

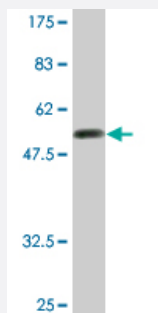
Lane 1: CENPH transfected lysate(28.5 KDa).

Lane 2: Non-transfected lysate.



### Sandwich ELISA (Recombinant protein)

Detection limit for recombinant GST tagged CENPH is 0.03 ng/ml as a capture antibody.



Western Blot detection against Immunogen (52.91 KDa) .

## Specification

### Product Description

Mouse monoclonal antibody raised against a full-length recombinant CENPH.

<b>Immunogen</b>	CENPH (AAH12024, 1 a.a. ~ 247 a.a) full-length recombinant protein with GST tag. MW of the GST tag alone is 26 KDa.
<b>Sequence</b>	MEEQPQMQDADEPADSGGEGRAGGPPQVAGAAACSEDRMTLLRLRAQTKQQLLEYKSMVD ASEEKTPEQIMQEKKIEAKIEDLENEIEEVKVAFEIKKLALDRMRLSTALKKNLEKISRQSSVLMND MKHLLLELNKLIMKSQQESWDLEEKLLDIRKKRLQLKQASESKLLEIQTEKNKQKIDLDSEMSERIK IIRQNLQMEIKITTVIQHVFNLLLGSKVNWAEDPALKENLQLEKNVDMM
<b>Host</b>	Mouse
<b>Reactivity</b>	Human
<b>Interspecies Antigen Sequence</b>	Mouse (65)
<b>Isotype</b>	IgG2a Kappa
<b>Quality Control Testing</b>	Antibody Reactive Against Recombinant Protein. Western Blot detection against Immunogen (52.91 KDa) .
<b>Storage Buffer</b>	In 1x PBS, pH 7.4
<b>Storage Instruction</b>	Store at -20°C or lower. Aliquot to avoid repeated freezing and thawing.

## Applications

- Western Blot (Transfected lysate)

Western Blot analysis of CENPH expression in transfected 293T cell line by CENPH monoclonal antibody (M01), clone 1F7.

Lane 1: CENPH transfected lysate(28.5 KDa).

Lane 2: Non-transfected lysate.

[Protocol Download](#)

- Western Blot (Recombinant protein)

[Protocol Download](#)

- Sandwich ELISA (Recombinant protein)

Detection limit for recombinant GST tagged CENPH is 0.03 ng/ml as a capture antibody.

[Protocol Download](#)

- ELISA

## Gene Info — CENPH

**Entrez GeneID** [64946](#)**GeneBank Accession#** [BC012024](#)**Protein Accession#** [AAH12024](#)**Gene Name** CENPH**Gene Alias** NNF1, PMF1**Gene Description** centromere protein H**Omim ID** [605607](#)**Gene Ontology** [Hyperlink](#)

**Gene Summary** Centromere and kinetochore proteins play a critical role in centromere structure, kinetochore formation, and sister chromatid separation. The protein encoded by this gene colocalizes with inner kinetochore plate proteins CENP-A and CENP-C in both interphase and metaphase. It localizes outside of centromeric heterochromatin, where CENP-B is localized, and inside the kinetochore corona, where CENP-E is localized during prometaphase. It is thought that this protein can bind to itself, as well as to CENP-A, CENP-B or CENP-C. Multimers of the protein localize constitutively to the inner kinetochore plate and play an important role in the organization and function of the active centromere-kinetochore complex. [provided by RefSeq]

**Other Designations** NNF1, MIND kinetochore complex component, homolog|kinetochore protein CENP-H