

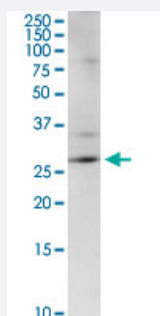
MaxPab®

CENPH purified MaxPab rabbit polyclonal antibody (D01P)

Catalog # H00064946-D01P

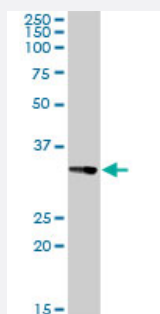
Size 100 ug

Applications



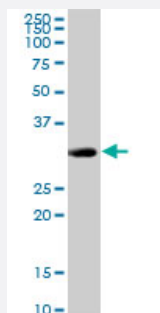
Western Blot (Tissue lysate)

CENPH MaxPab rabbit polyclonal antibody. Western Blot analysis of CENPH expression in mouse brain.



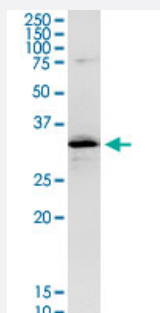
Western Blot (Tissue lysate)

CENPH MaxPab rabbit polyclonal antibody. Western Blot analysis of CENPH expression in human liver.



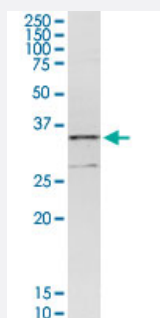
Western Blot (Tissue lysate)

CENPH MaxPab rabbit polyclonal antibody. Western Blot analysis of CENPH expression in mouse kidney.



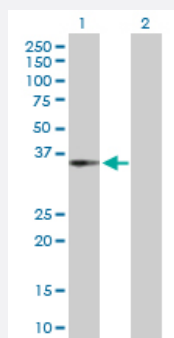
Western Blot (Cell lysate)

CENPH MaxPab rabbit polyclonal antibody. Western Blot analysis of CENPH expression in IMR-32.



Western Blot (Cell lysate)

CENPH MaxPab rabbit polyclonal antibody. Western Blot analysis of CENPH expression in PC-12.



Western Blot (Transfected lysate)

Western Blot analysis of CENPH expression in transfected 293T cell line ([H00064946-T01](#)) by CENPH MaxPab polyclonal antibody.

Lane 1: CENPH transfected lysate(27.28 KDa).

Lane 2: Non-transfected lysate.

Specification

Product Description	Rabbit polyclonal antibody raised against a full-length human CENPH protein.
Immunogen	CENPH (AAH12024, 1 a.a. ~ 247 a.a) full-length human protein.
Sequence	MEEQPQMQDADEPADSGGEGRAGGPPQVAGAQAACSEDRMTLLRLRAQTKQQLLEYKSMVD ASEEKTPEQIMQEKGIEAKIEDLENEIEEVKVAFEIKKLALDRMRLSTALKKNLEKISRQSSVLMDN MKHLLLELNKLIMKSQQESWDLEEKLLDIRKKRLQLKQASESKLLEIQTEKNKQKIDLDSMENSERIK IIRQNLQMEIKITTVIQHVFNILGSKVNWAEDPALKEVLQLEKNVDM
Host	Rabbit
Reactivity	Human, Mouse, Rat
Interspecies Antigen Sequence	Mouse (65)
Quality Control Testing	Antibody reactive against mammalian transfected lysate.
Storage Buffer	In 1x PBS, pH 7.4
Storage Instruction	Store at -20°C or lower. Aliquot to avoid repeated freezing and thawing.

Applications

- Western Blot (Tissue lysate)

CENPH MaxPab rabbit polyclonal antibody. Western Blot analysis of CENPH expression in mouse brain.

[Protocol Download](#)

- Western Blot (Tissue lysate)

CENPH MaxPab rabbit polyclonal antibody. Western Blot analysis of CENPH expression in human liver.

[Protocol Download](#)

- Western Blot (Tissue lysate)

CENPH MaxPab rabbit polyclonal antibody. Western Blot analysis of CENPH expression in mouse kidney.

[Protocol Download](#)

- Western Blot (Cell lysate)

CENPH MaxPab rabbit polyclonal antibody. Western Blot analysis of CENPH expression in IMR-32.

[Protocol Download](#)

- Western Blot (Cell lysate)

CENPH MaxPab rabbit polyclonal antibody. Western Blot analysis of CENPH expression in PC-12.

[Protocol Download](#)

- Western Blot (Transfected lysate)

Western Blot analysis of CENPH expression in transfected 293T cell line ([H00064946-T01](#)) by CENPH MaxPab polyclonal antibody.

Lane 1: CENPH transfected lysate(27.28 KDa).

Lane 2: Non-transfected lysate.

[Protocol Download](#)

Gene Info — CENPH

Entrez GeneID	64946
---------------	-----------------------

GeneBank Accession#	BC012024
---------------------	--------------------------

Protein Accession#	AAH12024
--------------------	--------------------------

Gene Name	CENPH
-----------	-------

Gene Alias	NNF1, PMF1
------------	------------

Gene Description	centromere protein H
Omim ID	605607
Gene Ontology	Hyperlink
Gene Summary	<p>Centromere and kinetochore proteins play a critical role in centromere structure, kinetochore formation, and sister chromatid separation. The protein encoded by this gene colocalizes with inner kinetochore plate proteins CENP-A and CENP-C in both interphase and metaphase. It localizes outside of centromeric heterochromatin, where CENP-B is localized, and inside the kinetochore corona, where CENP-E is localized during prometaphase. It is thought that this protein can bind to itself, as well as to CENP-A, CENP-B or CENP-C. Multimers of the protein localize constitutively to the inner kinetochore plate and play an important role in the organization and function of the active centromere-kinetochore complex. [provided by RefSeq]</p>
Other Designations	NNF1, MIND kinetochore complex component, homolog kinetochore protein CENP-H