

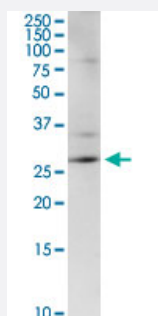
MaxPab®

# CENPH MaxPab rabbit polyclonal antibody (D01)

Catalog # H00064946-D01

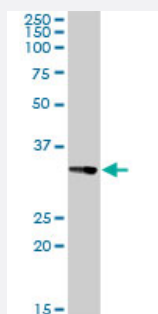
Size 100 uL

## Applications



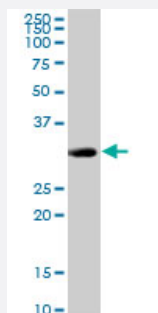
### Western Blot (Tissue lysate)

CENPH MaxPab rabbit polyclonal antibody. Western Blot analysis of CENPH expression in mouse brain.



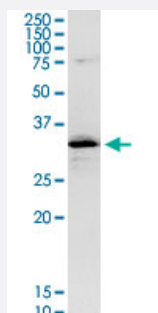
### Western Blot (Tissue lysate)

CENPH MaxPab rabbit polyclonal antibody. Western Blot analysis of CENPH expression in human liver.



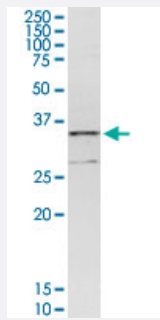
### Western Blot (Tissue lysate)

CENPH MaxPab rabbit polyclonal antibody. Western Blot analysis of CENPH expression in mouse kidney.



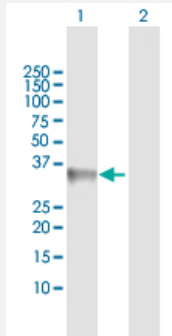
### Western Blot (Cell lysate)

CENPH MaxPab rabbit polyclonal antibody. Western Blot analysis of CENPH expression in IMR-32.



### Western Blot (Cell lysate)

CENPH MaxPab rabbit polyclonal antibody. Western Blot analysis of CENPH expression in PC-12.

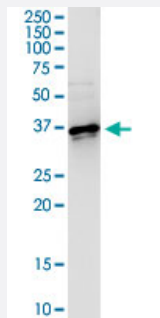


### Western Blot (Transfected lysate)

Western Blot analysis of CENPH expression in transfected 293T cell line ([H00064946-T01](#)) by CENPH MaxPab polyclonal antibody.

Lane 1: CENPH transfected lysate(27.28 KDa).

Lane 2: Non-transfected lysate.



### Immunoprecipitation

Immunoprecipitation of CENPH transfected lysate using anti-CENPH MaxPab rabbit polyclonal antibody and Protein A Magnetic Bead, and immunoblotted with CENPH purified MaxPab mouse polyclonal antibody (B01P) ([H00064946-B01P](#)).

## Specification

Product Description	Rabbit polyclonal antibody raised against a full-length human CENPH protein.
Immunogen	CENPH (AAH12024.1, 1 a.a. ~ 247 a.a) full-length human protein.
Sequence	MEEQPQMQDADEPADSGGEGRAGGPPQVAGAQAACSEDRMTLLRLRAQTKQQLLEYKSMVD ASEEKTPEQIMQEAKIEAKIEDLENEIEEVKVAFEIKKLALDRMRLSTALKKNLEKISRQSSVLMND MKHLLLELNKLIMKSQQESWDLEEKLLDIRKKRLQLKQASESKLLEIQTEKNKQKIDLDSEMSERIK IIRQNLQMEIKITTVIQHVFQNLILGSKVNWAEDPALKEIVLQLEKNVDM
Host	Rabbit
Reactivity	Human, Mouse, Rat
Interspecies Antigen Sequence	Mouse (65)

Quality Control Testing	Antibody reactive against mammalian transfected lysate.
Storage Buffer	No additive
Storage Instruction	Store at -20°C or lower. Aliquot to avoid repeated freezing and thawing.

## Applications

- Western Blot (Tissue lysate)

CENPH MaxPab rabbit polyclonal antibody. Western Blot analysis of CENPH expression in mouse brain.

[Protocol Download](#)

- Western Blot (Tissue lysate)

CENPH MaxPab rabbit polyclonal antibody. Western Blot analysis of CENPH expression in human liver.

[Protocol Download](#)

- Western Blot (Tissue lysate)

CENPH MaxPab rabbit polyclonal antibody. Western Blot analysis of CENPH expression in mouse kidney.

[Protocol Download](#)

- Western Blot (Cell lysate)

CENPH MaxPab rabbit polyclonal antibody. Western Blot analysis of CENPH expression in IMR-32.

[Protocol Download](#)

- Western Blot (Cell lysate)

CENPH MaxPab rabbit polyclonal antibody. Western Blot analysis of CENPH expression in PC-12.

[Protocol Download](#)

- Western Blot (Transfected lysate)

Western Blot analysis of CENPH expression in transfected 293T cell line ([H00064946-T01](#)) by CENPH MaxPab polyclonal antibody.

Lane 1: CENPH transfected lysate(27.28 KDa).

Lane 2: Non-transfected lysate.

[Protocol Download](#)

- Immunoprecipitation

Immunoprecipitation of CENPH transfected lysate using anti-CENPH MaxPab rabbit polyclonal antibody and Protein A Magnetic Bead, and immunoblotted with CENPH purified MaxPab mouse polyclonal antibody (B01P) ([H00064946-B01P](#)).

[Protocol Download](#)

## Gene Info — CENPH

Entrez GeneID [64946](#)

GeneBank Accession# [BC012024.1](#)

Protein Accession# [AAH12024.1](#)

Gene Name CENPH

Gene Alias NNF1, PMF1

Gene Description centromere protein H

Omim ID [605607](#)

Gene Ontology [Hyperlink](#)

**Gene Summary** Centromere and kinetochore proteins play a critical role in centromere structure, kinetochore formation, and sister chromatid separation. The protein encoded by this gene colocalizes with inner kinetochore plate proteins CENP-A and CENP-C in both interphase and metaphase. It localizes outside of centromeric heterochromatin, where CENP-B is localized, and inside the kinetochore corona, where CENP-E is localized during prometaphase. It is thought that this protein can bind to itself, as well as to CENP-A, CENP-B or CENP-C. Multimers of the protein localize constitutively to the inner kinetochore plate and play an important role in the organization and function of the active centromere-kinetochore complex. [provided by RefSeq]

**Other Designations** NNF1, MIND kinetochore complex component, homolog|kinetochore protein CENP-H