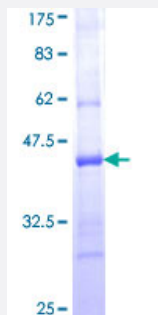


# PCDH20 (Human) Recombinant Protein (Q01)

Catalog # H00064881-Q01

Size 25 ug, 10 ug

## Applications



## Specification

<b>Product Description</b>	Human PCDH20 partial ORF ( NP_073754, 395 a.a. - 494 a.a.) recombinant protein with GST-tag at N-terminal.
<b>Sequence</b>	RPPEIVPRYIANEIDGVVYLKELEPVNTPIAFFTIRDPEGKYKVNCYLDGEGPFRLLSPYKPYNNEYLL ETTKPMDYELQQFYEVAVVAWNSEGFHVKRVI
<b>Host</b>	Wheat Germ (in vitro)
<b>Theoretical MW (kDa)</b>	36.74
<b>Interspecies Antigen Sequence</b>	Mouse (93); Rat (92)
<b>Preparation Method</b>	<a href="#">in vitro wheat germ expression system</a>
<b>Purification</b>	Glutathione Sepharose 4 Fast Flow
<b>Quality Control Testing</b>	12.5% SDS-PAGE Stained with Coomassie Blue.
<b>Storage Buffer</b>	50 mM Tris-HCl, 10 mM reduced Glutathione, pH=8.0 in the elution buffer.
<b>Storage Instruction</b>	Store at -80°C. Aliquot to avoid repeated freezing and thawing.
<b>Note</b>	Best use within three months from the date of receipt of this protein.

## Applications

- Enzyme-linked Immunoabsorbent Assay
- Western Blot (Recombinant protein)
- Antibody Production
- Protein Array

## Gene Info — PCDH20

**Entrez GeneID** [64881](#)

**GeneBank Accession#** [NM\\_022843](#)

**Protein Accession#** [NP\\_073754](#)

**Gene Name** PCDH20

**Gene Alias** FLJ22218, PCDH13

**Gene Description** protocadherin 20

**Gene Ontology** [Hyperlink](#)

**Gene Summary** This gene belongs to the protocadherin gene family, a subfamily of the cadherin superfamily. This gene encodes a protein which contains 6 extracellular cadherin domains, a transmembrane domain and a cytoplasmic tail differing from those of the classical cadherins. Although its specific function is undetermined, the cadherin-related neuronal receptor is thought to play a role in the establishment and function of specific cell-cell connections in the brain. [provided by RefSeq]

**Other Designations** OTTHUMP00000018487|protocadherin 13