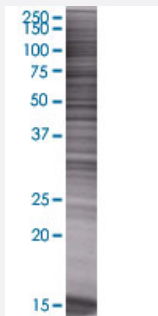


# CDCP1 293T Cell Transient Overexpression Lysate(Denatured)

Catalog # H00064866-T01

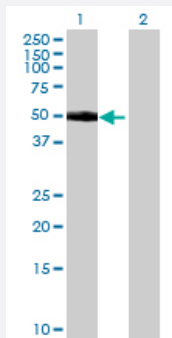
Size 100 uL

## Applications



### SDS-PAGE Gel

CDCP1 transfected lysate.



### Western Blot

Lane 1: CDCP1 transfected lysate ( 37.84 KDa)

Lane 2: Non-transfected lysate.

## Specification

**Transfected Cell Line** 293T

**Plasmid** pCMV-CDCP1 full-length

**Host** Human

**Theoretical MW (kDa)** 37.84

**Quality Control Testing** Transient overexpression cell lysate was tested with Anti-CDCP1 antibody ([H00064866-B01](#)) by Western Blots.  
 SDS-PAGE Gel  
 CDCP1 transfected lysate.  
 Western Blot  
 Lane 1: CDCP1 transfected lysate ( 37.84 KDa)  
 Lane 2: Non-transfected lysate.

Storage Buffer	1X Sample Buffer (50 mM Tris-HCl, 2% SDS, 10% glycerol, 300 mM 2-mercaptoethanol, 0.01% Bromophenol blue)
Storage Instruction	Store at -80°C. Aliquot to avoid repeated freezing and thawing.

## Applications

- Western Blot

## Gene Info — CDCP1

Entrez GeneID	<a href="#">64866</a>
GeneBank Accession#	<a href="#">NM_178181.1</a>
Protein Accession#	<a href="#">NP_835488.1</a>
Gene Name	CDCP1
Gene Alias	CD318, SIMA135, TRASK
Gene Description	CUB domain containing protein 1
Gene Ontology	<a href="#">Hyperlink</a>
Gene Summary	The protein encoded by this gene is a transmembrane protein containing three extracellular CUB domains. This protein is found to be overexpressed in colon and lung cancers. Its expression level is correlated with the metastatic ability of carcinoma cells. This protein is located on the cell surface. It has been shown to be tyrosine phosphorylated in a cancer cell line. Alternatively spliced transcript variants encoding distinct isoforms have been reported. [provided by RefSeq]
Other Designations	CUB domain-containing protein 1 OTTHUMP00000164120 transmembrane and associated with src kinases