

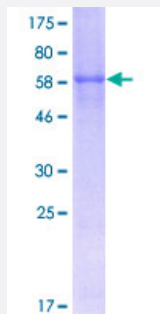
Full-Length

CDCP1 (Human) Recombinant Protein (P01)

Catalog # H00064866-P01

Size 25 ug, 10 ug

Applications



Specification

Product Description

Human CDCP1 full-length ORF (NP_835488.1, 1 a.a. - 343 a.a.) recombinant protein with GST-tag at N-terminal.

Sequence

MAGLNCGVSIALLGVLLLGAARLPRGAFAFEIALPRESNITVLIKLGTPDLLAKPCYVISKRHITMLSIK
SGERIVFTFSCQSPENHFVIEIQKNIDCMSPGCPFGEVQLQPSTLLPTLNRTFIWDVKAHKSIGLE
LQFSIPRLRQIGPGESCPDGVTHSISGRIDATTVRIGTFCSNGTVSRIKMQEGVKMALHLPWFHPRN
VSGFSIANRSSIKRLCIIESVFEGEGSATLMSANYPEGFPEDELMTWQFVVPAPHLRASVSFLNFNL
SNCKERKEERVEYYPGSTTNPEVFKLEDKQPGNMAGNFNLSLQGCDQDAQSPGILRLQFQVLVQ
HPQNESSE

Host

Wheat Germ (in vitro)

Theoretical MW (kDa)

64.2

Preparation Method

[in vitro wheat germ expression system](#)

Purification

Glutathione Sepharose 4 Fast Flow

Quality Control Testing

12.5% SDS-PAGE Stained with Coomassie Blue.

Storage Buffer

50 mM Tris-HCl, 10 mM reduced Glutathione, pH=8.0 in the elution buffer.

Storage Instruction

Store at -80°C. Aliquot to avoid repeated freezing and thawing.

Note

Best use within three months from the date of receipt of this protein.

Applications

- Enzyme-linked Immunoabsorbent Assay
- Western Blot (Recombinant protein)
- Antibody Production
- Protein Array

Gene Info — CDCP1

Entrez GeneID [64866](#)

GeneBank Accession# [NM_178181.1](#)

Protein Accession# [NP_835488.1](#)

Gene Name CDCP1

Gene Alias CD318, SIMA135, TRASK

Gene Description CUB domain containing protein 1

Gene Ontology [Hyperlink](#)

Gene Summary The protein encoded by this gene is a transmembrane protein containing three extracellular CUB domains. This protein is found to be overexpressed in colon and lung cancers. Its expression level is correlated with the metastatic ability of carcinoma cells. This protein is located on the cell surface. It has been shown to be tyrosine phosphorylated in a cancer cell line. Alternatively spliced transcript variants encoding distinct isoforms have been reported. [provided by RefSeq]

Other Designations CUB domain-containing protein 1|OTTHUMP00000164120|transmembrane and associated with src kinases