

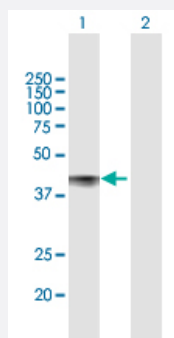
MaxPab®

CDCP1 purified MaxPab mouse polyclonal antibody (B01P)

Catalog # H00064866-B01P

Size 50 ug

Applications



Western Blot (Transfected lysate)

Western Blot analysis of CDCP1 expression in transfected 293T cell line ([H00064866-T01](#)) by CDCP1 MaxPab polyclonal antibody.

Lane 1: CDCP1 transfected lysate(37.73 KDa).

Lane 2: Non-transfected lysate.

Specification

Product Description

Mouse polyclonal antibody raised against a full-length human CDCP1 protein.

Immunogen

CDCP1 (NP_835488.1, 1 a.a. ~ 343 a.a) full-length human protein.

Sequence

MAGLNCGVSIALLGVLLGAARLPRGAFAFEIALPRESNITVLIKLGTPDLLAKPCYVISKRHITMLSIK
SGERIVFTFSCQSPENHFVIEIQKNIDCMGPGCPFGEVQLQPSTSLPLNRTFIWDVKAHKSIGLE
LQFSIPRLRQIGPGESCPDGVTHSISGRIDATVVRIGTFCSNGTVSRIKMQEGVKMALHLPWFHPRN
VSGFSIANRSSIKRLCIIESVFEGEGSATLMSANYPEGFPEDELMTWQFVVPALHRASVSFLNFNL
SNCKERKEERVEYYIPGSTTNPEVFKLEDKQPGNMAGNFNLSLQGCDDAQSPGILRLQFQVLVQ
HPQNESSE

Host

Mouse

Reactivity

Human

Quality Control Testing

Antibody reactive against mammalian transfected lysate.

Storage Buffer

In 1x PBS, pH 7.4

Storage Instruction

Store at -20°C or lower. Aliquot to avoid repeated freezing and thawing.

Applications

- Western Blot (Transfected lysate)

Western Blot analysis of CDCP1 expression in transfected 293T cell line ([H00064866-T01](#)) by CDCP1 MaxPab polyclonal antibody.

Lane 1: CDCP1 transfected lysate(37.73 KDa).

Lane 2: Non-transfected lysate.

[Protocol Download](#)

Gene Info — CDCP1

Entrez GeneID	64866
---------------	-----------------------

GeneBank Accession#	NM_178181.1
---------------------	-----------------------------

Protein Accession#	NP_835488.1
--------------------	-----------------------------

Gene Name	CDCP1
-----------	-------

Gene Alias	CD318, SIMA135, TRASK
------------	-----------------------

Gene Description	CUB domain containing protein 1
------------------	---------------------------------

Gene Ontology	Hyperlink
---------------	---------------------------

Gene Summary	The protein encoded by this gene is a transmembrane protein containing three extracellular CUB domains. This protein is found to be overexpressed in colon and lung cancers. Its expression level is correlated with the metastatic ability of carcinoma cells. This protein is located on the cell surface. It has been shown to be tyrosine phosphorylated in a cancer cell line. Alternatively spliced transcript variants encoding distinct isoforms have been reported. [provided by RefSeq]
--------------	---

Other Designations	CUB domain-containing protein 1 OTTHUMP00000164120 transmembrane and associated with src kinases
--------------------	--