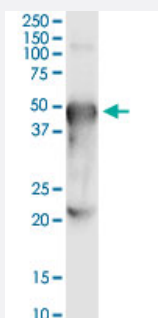


PORCN (Human) IP-WB Antibody Pair

Catalog # H00064840-PW1

Size 1 Set

Applications



Immunoprecipitation of PORCN transfected lysate using rabbit polyclonal anti-PORCN and Protein A Magnetic Bead ([U0007](#)), and immunoblotted with rabbit polyclonal anti-PORCN.

Specification

Product Description	This IP-WB antibody pair set comes with one antibody for immunoprecipitation and another to detect the precipitated protein in western blot.
Reactivity	Human
Interspecies Antigen Sequence	Mouse (96); Rat (96)
Quality Control Testing	Immunoprecipitation-Western Blot (IP-WB) Immunoprecipitation of PORCN transfected lysate using rabbit polyclonal anti-PORCN and Protein A Magnetic Bead (U0007), and immunoblotted with rabbit polyclonal anti-PORCN.
Supplied Product	Antibody pair set content: 1. Antibody pair for IP: rabbit polyclonal anti-PORCN (300 ul) 2. Antibody pair for WB: rabbit polyclonal anti-PORCN (50 ul)
Storage Instruction	Store reagents of the antibody pair set at -20°C or lower. Please aliquot to avoid repeated freeze thaw cycle. Reagents should be returned to -20°C storage immediately after use.

Applications

- Immunoprecipitation-Western Blot

[Protocol Download](#)

Gene Info — PORCN

Entrez GeneID [64840](#)

Gene Name PORCN

Gene Alias DHOF, FODH, MG61, MGC29687, PORC, PPN, por

Gene Description porcupine homolog (Drosophila)

Omim ID [300651](#) [305600](#)

Gene Ontology [Hyperlink](#)

Gene Summary This gene belongs to the evolutionarily conserved porcupine (Porc) gene family. Genes of the Porc family encode endoplasmic reticulum proteins with multiple transmembrane domains. Porcupine proteins are involved in the processing of Wnt (wingless and int homologue) proteins. Multiple alternatively spliced transcript variants encoding distinct isoforms have been observed. [provided by RefSeq]

Other Designations 2410004O13Rik|OTTHUMP00000025784|OTTHUMP00000025785|porcupine

Pathway

- [Wnt signaling pathway](#)