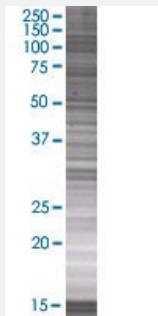


# FBXL17 293T Cell Transient Overexpression Lysate(Denatured)

Catalog # H00064839-T01

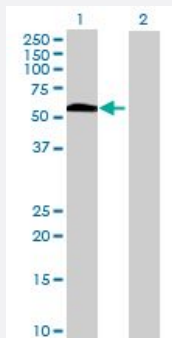
Size 100 uL

## Applications



### SDS-PAGE Gel

FBXL17 transfected lysate.



### Western Blot

Lane 1: FBXL17 transfected lysate ( 40.7 KDa)

Lane 2: Non-transfected lysate.

## Specification

Transfected Cell Line	293T
Plasmid	pCMV-FBXL17 full-length
Host	Human
Theoretical MW (kDa)	40.7
Interspecies Antigen Sequence	Mouse (86); Rat (32)

**Quality Control Testing**

Transient overexpression cell lysate was tested with Anti-FBXL17 antibody ([H00064839-B01](#)) by Western Blots.  
SDS-PAGE Gel  
FBXL17 transfected lysate.  
Western Blot  
Lane 1: FBXL17 transfected lysate ( 40.7 KDa)  
Lane 2: Non-transfected lysate.

**Storage Buffer**

1X Sample Buffer (50 mM Tris-HCl, 2% SDS, 10% glycerol, 300 mM 2-mercaptoethanol, 0.01% Bromophenol blue)

**Storage Instruction**

Store at -80°C. Aliquot to avoid repeated freezing and thawing.

## Applications

- Western Blot

## Gene Info — FBXL17

**Entrez GeneID**[64839](#)**GeneBank Accession#**[BC063316.1](#)**Protein Accession#**[AAH63316.1](#)**Gene Name**

FBXL17

**Gene Alias**

DKFZp434C1715, FBXO13, Fbl17, Fbx13, MGC161422, MGC161424

**Gene Description**

F-box and leucine-rich repeat protein 17

**Omim ID**[609083](#)**Gene Ontology**[Hyperlink](#)**Gene Summary**

Members of the F-box protein family, such as FBXL17, are characterized by an approximately 40-amino acid F-box motif. SCF complexes, formed by SKP1 (MIM 601434), cullin (see CUL1; MIM 603134), and F-box proteins, act as protein-ubiquitin ligases. F-box proteins interact with SKP1 through the F box, and they interact with ubiquitination targets through other protein interaction domains (Jin et al., 2004 [PubMed 15520277]).[supplied by OMIM]

**Other Designations**

F-box only protein 13

## Disease

- [Tobacco Use Disorder](#)