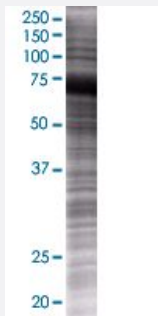


# KLC2 293T Cell Transient Overexpression Lysate(Denatured)

Catalog # H00064837-T01

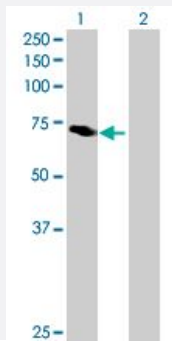
Size 100 uL

## Applications



### SDS-PAGE Gel

KLC2 transfected lysate.



### Western Blot

Lane 1: KLC2 transfected lysate ( 68.9 KDa)

Lane 2: Non-transfected lysate.

## Specification

Transfected Cell Line	293T
Plasmid	pCMV-KLC2 full-length
Host	Human
Theoretical MW (kDa)	68.9
Interspecies Antigen Sequence	Mouse (95); Rat (96)

**Quality Control Testing**

Transient overexpression cell lysate was tested with Anti-KLC2 antibody ([H00064837-B01](#)) by Western Blots.  
SDS-PAGE Gel  
KLC2 transfected lysate.  
Western Blot  
Lane 1: KLC2 transfected lysate ( 68.9 KDa)  
Lane 2: Non-transfected lysate.

**Storage Buffer**

1X Sample Buffer (50 mM Tris-HCl, 2% SDS, 10% glycerol, 300 mM 2-mercaptoethanol, 0.01% Bromophenol blue)

**Storage Instruction**

Store at -80°C. Aliquot to avoid repeated freezing and thawing.

## Applications

- Western Blot

## Gene Info — KLC2

**Entrez GeneID**[64837](#)**GeneBank Accession#**[NM\\_022822](#)**Protein Accession#**[NP\\_073733](#)**Gene Name**

KLC2

**Gene Alias**

FLJ12387

**Gene Description**

kinesin light chain 2

**Gene Ontology**[Hyperlink](#)**Gene Summary**

Kinesin is a molecular motor that generates ATP-dependent movement of vesicles and organelles along microtubules. Kinesin consists of 2 light chains, such as KLC2, and 2 heavy chains (see KIF5B; MIM 602809) in a 1:1 stoichiometric ratio (Rahman et al., 1998 [PubMed 9624122]).[supplied by OMIM]

**Other Designations**

OTTHUMP00000165218