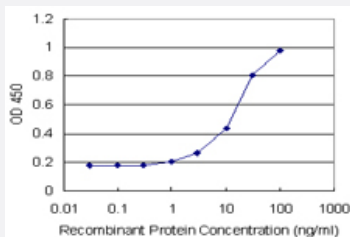


DEPDC6 (Human) Matched Antibody Pair

Catalog # H00064798-AP21

Size 1 Set

Applications



Sandwich ELISA detection sensitivity ranging from 1 ng/ml to 100 ng/ml.

Specification

Product Description	This antibody pair set comes with a matched antibody pair to detect and quantify the protein level of human DEPDC6.
Reactivity	Human
Interspecies Antigen Sequence	Mouse (95)
Quality Control Testing	Standard curve using recombinant protein (H00064798-P01) as an analyte. Sandwich ELISA detection sensitivity ranging from 1 ng/ml to 100 ng/ml.
Supplied Product	Antibody pair set content: 1. Capture antibody: rabbit MaxPab® affinity purified polyclonal anti-DEPDC6 (100 ug) 2. Detection antibody: mouse purified polyclonal anti-DEPDC6 (20 ug) *Reagents are sufficient for at least 1-2 x 96 well plates using recommended protocols.
Storage Instruction	Store reagents of the antibody pair set at -20°C or lower. Please aliquot to avoid repeated freeze thaw cycle. Reagents should be returned to -20°C storage immediately after use.

Applications

- ELISA Pair (Recombinant protein)

[Protocol Download](#)

Gene Info — DEPDC6

Entrez GeneID	64798
Gene Name	DEPDC6
Gene Alias	DEP.6, DKFZp564B1778, FLJ12341, FLJ12428, FLJ13854
Gene Description	DEP domain containing 6
Gene Ontology	Hyperlink
Other Designations	-

Disease

- [Tobacco Use Disorder](#)