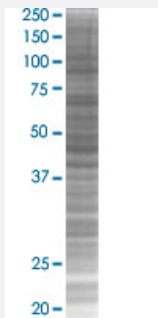


EPS8L2 293T Cell Transient Overexpression Lysate(Denatured)

Catalog # H00064787-T02

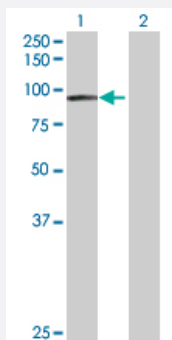
Size 100 uL

Applications



SDS-PAGE Gel

EPS8L2 transfected lysate.



Western Blot

Lane 1: EPS8L2 transfected lysate (80.60 KDa)

Lane 2: Non-transfected lysate.

Specification

Transfected Cell Line	293T
Plasmid	pCMV-EPS8L2 full-length
Host	Human
Theoretical MW (kDa)	80.6
Interspecies Antigen Sequence	Mouse (85); Rat (84)

Quality Control Testing

Transient overexpression cell lysate was tested with Anti-EPS8L2 antibody ([H00064787-D01P](#)) by Western Blots.
SDS-PAGE Gel
EPS8L2 transfected lysate.
Western Blot
Lane 1: EPS8L2 transfected lysate (80.60 KDa)
Lane 2: Non-transfected lysate.

Storage Buffer

1X Sample Buffer (50 mM Tris-HCl, 2% SDS, 10% glycerol, 300 mM 2-mercaptoethanol, 0.01% Bromophenol blue)

Storage Instruction

Store at -80°C. Aliquot to avoid repeated freezing and thawing.

Applications

- Western Blot

Gene Info — EPS8L2

Entrez GeneID

[64787](#)

GeneBank Accession#

[NM_022772.2](#)

Protein Accession#

[NP_073609.2](#)

Gene Name

EPS8L2

Gene Alias

EPS8R2, FLJ16738, FLJ21935, FLJ22171, MGC126530, MGC3088

Gene Description

EPS8-like 2

Gene Ontology

[Hyperlink](#)

Gene Summary

This gene encodes a member of the EPS8 gene family. The encoded protein, like other members of the family, is thought to link growth factor stimulation to actin organization, generating functional redundancy in the pathways that regulate actin cytoskeletal remodeling. [provided by RefSeq]

Other Designations

EPS8-related protein 2|epidermal growth factor receptor pathway substrate 8-like protein 2|epidermal growth factor receptor pathway substrate 8-related protein 2