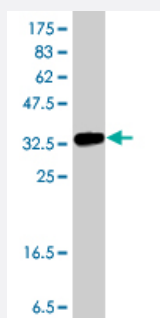


ATPAF1 polyclonal antibody (A01)

Catalog # H00064756-A01

Size 50 uL

Applications



Western Blot detection against Immunogen (38.21 KDa) .

Specification

Product Description	Mouse polyclonal antibody raised against a partial recombinant ATPAF1.
Immunogen	ATPAF1 (NP_073582, 219 a.a. ~ 328 a.a) partial recombinant protein with GST tag.
Sequence	LHFTALINQTRGEAAASQLILYHYPELKEEKGIVLMTAEMDSTFLNVAEAQCIANQVQLFYATDRKE TYGLVETFNLRPNFEFKYMSVIAELEQSGLGAEKCAQNQNK
Host	Mouse
Reactivity	Human
Interspecies Antigen Sequence	Mouse (90); Rat (88)
Quality Control Testing	Antibody Reactive Against Recombinant Protein. Western Blot detection against Immunogen (38.21 KDa) .
Storage Buffer	50 % glycerol
Storage Instruction	Store at -20°C or lower. Aliquot to avoid repeated freezing and thawing.

Applications

- Western Blot (Recombinant protein)

[Protocol Download](#)

- ELISA

Gene Info — ATPAF1

Entrez GeneID [64756](#)

GeneBank Accession# [NM_022745](#)

Protein Accession# [NP_073582](#)

Gene Name ATPAF1

Gene Alias ATP11, ATP11p, FLJ22351, MGC88060

Gene Description ATP synthase mitochondrial F1 complex assembly factor 1

Omim ID [608917](#)

Gene Ontology [Hyperlink](#)

Gene Summary This gene encodes an assembly factor for the F(1) component of the mitochondrial ATP synthase. This protein binds specifically to the F1 beta subunit and is thought to prevent this subunit from forming nonproductive homooligomers during enzyme assembly. Alternatively spliced transcript variants have been identified, but the biological validity of some of these variants has not been determined. [provided by RefSeq]

Other Designations OTTHUMP00000009681|homolog of yeast ATP11

Disease

- [Tobacco Use Disorder](#)