

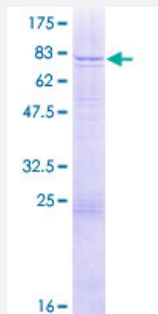
Full-Length

WDR13 (Human) Recombinant Protein (P01)

Catalog # H00064743-P01

Size 25 ug, 10 ug

Applications



Specification

Product Description

Human WDR13 full-length ORF (NP_060353.2, 1 a.a. - 485 a.a.) recombinant protein with GST-tag at N-terminal.

Sequence

MAAVWQQVLAVDARYNAYRTPTFPQFRTQYIRRRSQLLRENAKAGHPPALRRQYLRLRGQLLGQ
RYGPLSEPGSARAYSNSIVRSSRTLDRMEDFEDDPRALGARGHRRSVSRGSYQLQAQMNRVY
EDRPPGSVVPTSAAEASRAMAGDTSLSENYAFAGMYHVFQHVDEAVPRVRFANDDRHLAC
CSLDGSISLCQLVPAPPTVLRVLRGHTRGVSDFAWSLSNDILVSTSLDATMRWASEDGRCIREIP
DPDSAELLCTFQPVNNNLTVVGNKHNHVMNISTGKKVKGGSSKLTGRVLALSFDAPGRLLW
AGDDRGSVFSFLFDMATGKLTAKRLVHEGSPVTSISARSWVSREARDPSLLINACLNKLLLYR
VVDNEGTLQLKRSFPIEQSSHPVRSIFCPLMSFRQGACVVTGSEDMCVHFFDVERAAKAAVNKL
QGHSAVLVDVSFNCDESLASSDASGMVWVRREQK

Host

Wheat Germ (in vitro)

Theoretical MW (kDa)

80.1

Interspecies Antigen Sequence

Mouse (99); Rat (98)

Preparation Method

[in vitro wheat germ expression system](#)

Purification

Glutathione Sepharose 4 Fast Flow

Quality Control Testing

12.5% SDS-PAGE Stained with Coomassie Blue.

Storage Buffer	50 mM Tris-HCl, 10 mM reduced Glutathione, pH=8.0 in the elution buffer.
Storage Instruction	Store at -80°C. Aliquot to avoid repeated freezing and thawing.
Note	Best use within three months from the date of receipt of this protein.

Applications

- Enzyme-linked Immunoabsorbent Assay
- Western Blot (Recombinant protein)
- Antibody Production
- Protein Array

Gene Info — WDR13

Entrez GeneID [64743](#)

GeneBank Accession# [NM_017883.3](#)

Protein Accession# [NP_060353.2](#)

Gene Name WDR13

Gene Alias DKFZp779C2057, FLJ20563, MG21

Gene Description WD repeat domain 13

Omim ID [300512](#)

Gene Ontology [Hyperlink](#)

Gene Summary This gene encodes a member of the WD repeat protein family. WD repeats are minimally conserved regions of approximately 40 amino acids typically bracketed by gly-his and trp-aspartate (GH-WD), which may facilitate formation of heterotrimeric or multiprotein complexes. Members of this family are involved in a variety of cellular processes, including cell cycle progression, signal transduction, apoptosis, and gene regulation. This gene is widely expressed in various tissues, and located in chromosome X. The function of this gene has not been determined. [provided by RefSeq]

Other Designations OTTHUMP00000025798|OTTHUMP00000025799|WD repeat domain 13 protein|located at OAT L1